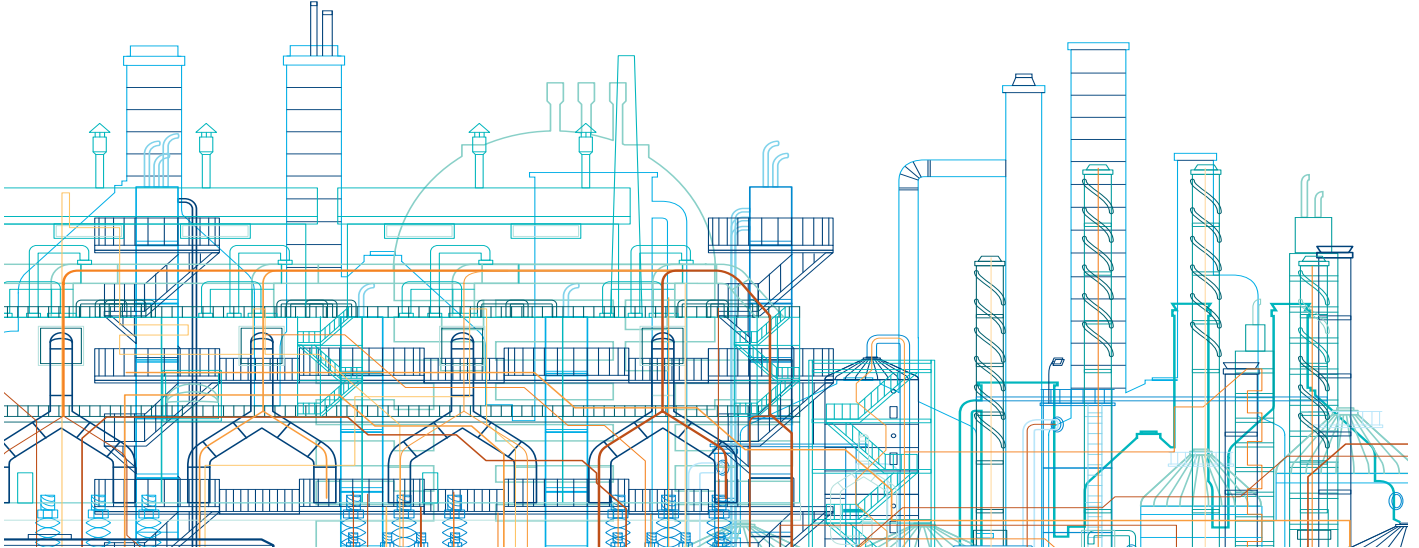


UNITROL® P spare parts

Maximizing your operating time



ABB's spare part service for UNITROL P excitation systems, plays a key role in maintaining the availability and minimizing downtime. Having the right part at the right place and at the right time is essential preparation for unexpected situations.

Spare part availability is a matter of top priority. To recover from a stoppage quickly, the right part should be available on-site, immediately. Spare parts represent a small investment that can have a significant effect on profit.

Benefits

- Guaranteed full system functionality and safe operation
- Minimized risk exposure to unexpected downtime
- Genuine OEM spare parts

Highly recommended spare parts

Those spare parts that have a long delivery time, and as such would have the greatest impact on a UNITROL P's downtime, need to have a high priority for customers. A detailed list of these parts can be found on the back page.

Recommended spare parts

There are some spare parts that would have an impact on the availability of a UNITROL P, but which are more readily available. These include panels, backplanes or electromechanical parts (relays, contactors), protection relays, transducers, components like resistors, capacitors, diode and thyristor modules, varistors.

Spare parts for maximum availability

All parts covering basic needs (i.e. thermostats, relay sockets, transformers - excepted cables and terminals).

Highly recommended spare parts for one UNITROL® P unit

Description	Type	Identification no.	Pcs used in one unit
Processing Unit	PP C322 BE1	HIEE300900R0001	2
Gate Control Unit	GD B021 BE1	HIEE300766R0001	2
Combined I/O	UA C326 AE 1	HIEE401481R0001	2
Power Pack	KU C321 AE1	HIEE300698R0001	2
Input Filter for Power Supply		3BHE003523R0030	1
Power Pack	MPS 10/5-230/24/48	3BHB006449R0001	2
Converter Electronics	UNS 3670, V2	HIEE205011R0002	4
Fan 230V, 240W	GDRM 42-133B-2	3BHE018893R0001	8
Thyristor	SPEZ 3BHS126938	3BHE013707R0002	27
Thyristor fuse	170M6501	HIER465095P0003	24
Measuring Interface	UNC 4672a-P, V1	HIEE205012R0001	2
Measuring Interface	UNC 4673a-P, V1	HIEE205014R0001	2
Binary Field Bus Coupler	UP C090 AE1	HIEE300661R0001	3
Binary Input 16 Fold	UF C092 B1	HIEE300910R0001	1
Output Relay 16 Fold	AR C093 A1	HIEE300690R0001	2
Analog Input/Output module	UA C096AE1	HIEE300794R0001	1
I/O Interface	UNC 4674b-E, V1	HIEE305089R0001	2
Firing Unit	UNS 0017a-P	HIEE305106R0001	1
Board overvoltage protection	UNS 4684a-P V1	HIEE305144R0001	4
Fuse	20A 1000VDC/1500VAC	3BHB004572R0006	3
Fuse	20A 1000VDC/1500VAC	HETT401476P0010	2
Fuse	6A 1000VDC/1500VAC	HETT401476P0005	6
Fuse	50AT	HETT401476P0014	12

Document ID 3BHS681831 © Copyright 2014 ABB. All rights reserved.

Please note: Recommended and other possible spare parts are always tailored to application specific requirements. For details please get in contact with the service team.

For more information please contact:

ABB Switzerland Ltd.

Austrasse

5300 Turgi / Switzerland

Tel: +41 (0)58 589 34 34

E-Mail: spares.pes@ch.abb.com

www.abb.com/powerelectronics

Power and productivity
for a better world™

