

# VIPA HMI

TP-ECO | 62K-NHC0 | Manual

HB160 | TP-ECO | 62K-NHC0 | en | 17-09

Touch Panel - TP610LC/+



VIPA GmbH  
Ohmstr. 4  
91074 Herzogenaurach  
Telephone: +49 9132 744-0  
Fax: +49 9132 744-1864  
Email: [info@vipa.com](mailto:info@vipa.com)  
Internet: [www.vipa.com](http://www.vipa.com)

## Table of contents

<b>1</b>	<b>General</b> .....	<b>5</b>
	1.1 Copyright © VIPA GmbH .....	5
	1.2 About this manual.....	6
	1.3 Safety information.....	7
<b>2</b>	<b>Hardware description</b> .....	<b>8</b>
	2.1 Safety information for users.....	8
	2.2 Properties.....	8
	2.3 Structure.....	10
	2.3.1 Overview.....	10
	2.3.2 Interfaces.....	12
	2.3.3 Memory management.....	15
	2.4 Dimensions.....	15
	2.5 General data.....	17
	2.6 Technical data.....	18
	2.6.1 62K-NHC0-DH.....	18
	2.6.2 62K-NHC0-CB.....	20
<b>3</b>	<b>Deployment under Windows CE 6.0 Core</b> .....	<b>23</b>
	3.1 Installation.....	23
	3.2 Installation of the optional MPI/PROFIBUS DP interface .....	24
	3.3 Commissioning.....	26
	3.3.1 VIPA Startup-Manager.....	26
	3.4 Installation Movicon and Startup-Manager.....	28
	3.5 Connection to a PLC system.....	31
	3.6 Operating system Windows® Embedded CE 6.0 Core.....	31
	3.6.1 General .....	31
	3.6.2 Structure.....	33
	3.7 Integrated Server.....	37
	3.7.1 General.....	37
	3.7.2 ftp server.....	38
	3.7.3 VNC server.....	39
	3.8 Access to the network resources.....	40
<b>4</b>	<b>Deployment under Windows CE 6.0 Prof.</b> .....	<b>43</b>
	4.1 Installation.....	43
	4.2 Installation of the optional MPI/PROFIBUS DP interface .....	44
	4.3 Commissioning.....	46
	4.3.1 VIPA Startup-Manager.....	46
	4.4 Installation Movicon and Startup-Manager.....	49
	4.5 Connection to a PLC system.....	52
	4.6 Operating system Windows® Embedded CE 6.0 Prof.....	52
	4.6.1 General .....	52
	4.6.2 Structure.....	54
	4.7 Integrated Server.....	58
	4.7.1 General.....	58
	4.7.2 ftp server.....	59
	4.7.3 http server.....	60
	4.7.4 Telnet server.....	60
	4.7.5 VNC server.....	61

---

4.8	Access to the network resources.....	63
<b>5</b>	<b>Installation Guidelines.....</b>	<b>65</b>
5.1	Basic rules for the EMC-equitable assembly of installations.....	65
5.2	EMC-equitable assembly.....	68
5.3	EMC-equitable cabling.....	69
5.4	Special precautions providing high noise immunity.....	72
5.5	Checklist for the EMC-compliant installation of controllers.....	73

# 1 General

## 1.1 Copyright © VIPA GmbH

### All Rights Reserved

This document contains proprietary information of VIPA and is not to be disclosed or used except in accordance with applicable agreements.

This material is protected by the copyright laws. It may not be reproduced, distributed, or altered in any fashion by any entity (either internal or external to VIPA), except in accordance with applicable agreements, contracts or licensing, without the express written consent of VIPA and the business management owner of the material.

For permission to reproduce or distribute, please contact: VIPA, Gesellschaft für Visualisierung und Prozessautomatisierung mbH Ohmstraße 4, D-91074 Herzogenaurach, Germany

Tel.: +49 9132 744 -0

Fax.: +49 9132 744-1864

E-Mail: [info@vipa.de](mailto:info@vipa.de)

<http://www.vipa.com>



*Every effort has been made to ensure that the information contained in this document was complete and accurate at the time of publishing. Nevertheless, the authors retain the right to modify the information.*

*This customer document describes all the hardware units and functions known at the present time. Descriptions may be included for units which are not present at the customer site. The exact scope of delivery is described in the respective purchase contract.*

### CE Conformity Declaration

Hereby, VIPA GmbH declares that the products and systems are in compliance with the essential requirements and other relevant provisions. Conformity is indicated by the CE marking affixed to the product.

### Conformity Information

For more information regarding CE marking and Declaration of Conformity (DoC), please contact your local VIPA customer service organization.

### Trademarks

VIPA, SLIO, System 100V, System 200V, System 300V, System 300S, System 400V, System 500S and Commander Compact are registered trademarks of VIPA Gesellschaft für Visualisierung und Prozessautomatisierung mbH.

SPEED7 is a registered trademark of profichip GmbH.

SIMATIC, STEP, SINEC, TIA Portal, S7-300 and S7-400 are registered trademarks of Siemens AG.

Microsoft and Windows are registered trademarks of Microsoft Inc., USA.

Portable Document Format (PDF) and Postscript are registered trademarks of Adobe Systems, Inc.

All other trademarks, logos and service or product marks specified herein are owned by their respective companies.

### Information product support

Contact your local VIPA Customer Service Organization representative if you wish to report errors or questions regarding the contents of this document. If you are unable to locate a customer service centre, contact VIPA as follows:

About this manual

VIPA GmbH, Ohmstraße 4, 91074 Herzogenaurach, Germany  
 Telefax: +49 9132 744-1204  
 EMail: documentation@vipa.de

### Technical support

Contact your local VIPA Customer Service Organization representative if you encounter problems with the product or have questions regarding the product. If you are unable to locate a customer service centre, contact VIPA as follows:

VIPA GmbH, Ohmstraße 4, 91074 Herzogenaurach, Germany  
 Tel.: +49 9132 744-1150 (Hotline)  
 EMail: support@vipa.de

## 1.2 About this manual

### Objective and contents

This manual describes the Touch Panel 62K-NHC0-... from VIPA. It contains a description of the structure, project engineering and deployment.

Product	Order number	as of state:	
		HW	BS
TP 610LC	62K-NHC0-DH	01	Windows® CE 6.0 Core
TP 610LC+	62K-NHC0-CB	01	Windows® CE 6.0 Prof.

### Target audience

The manual is targeted at users who have a background in automation technology.

### Structure of the manual

The manual consists of chapters. Every chapter provides a self-contained description of a specific topic.

### Guide to the document

The following guides are available in the manual:

- An overall table of contents at the beginning of the manual
- References with page numbers

### Availability

The manual is available in:

- printed form, on paper
- in electronic form as PDF-file (Adobe Acrobat Reader)

### Icons Headings

Important passages in the text are highlighted by following icons and headings:



#### **DANGER!**

Immediate or likely danger. Personal injury is possible.

**CAUTION!**

Damages to property is likely if these warnings are not heeded.



*Supplementary information and useful tips.*

### 1.3 Safety information

**Applications conforming with specifications**

The system is constructed and produced for:

- communication and process control
- general control and automation tasks
- industrial applications
- operation within the environmental conditions specified in the technical data
- installation into a cubicle

**DANGER!**

This device is not certified for applications in

- in explosive environments (EX-zone)

**Documentation**

The manual must be available to all personnel in the

- project design department
- installation department
- commissioning
- operation

**CAUTION!**

**The following conditions must be met before using or commissioning the components described in this manual:**

- Hardware modifications to the process control system should only be carried out when the system has been disconnected from power!
- Installation and hardware modifications only by properly trained personnel.
- The national rules and regulations of the respective country must be satisfied (installation, safety, EMC ...)

**Disposal**

**National rules and regulations apply to the disposal of the unit!**

## 2 Hardware description

### 2.1 Safety information for users

#### Handling of electrostatic sensitive modules

VIPA modules make use of highly integrated components in MOS-Technology. These components are extremely sensitive to over-voltages that can occur during electrostatic discharges. The following symbol is attached to modules that can be destroyed by electrostatic discharges.



The Symbol is located on the module, the module rack or on packing material and it indicates the presence of electrostatic sensitive equipment. It is possible that electrostatic sensitive equipment is destroyed by energies and voltages that are far less than the human threshold of perception. These voltages can occur where persons do not discharge themselves before handling electrostatic sensitive modules and they can damage components thereby, causing the module to become inoperable or unusable. Modules that have been damaged by electrostatic discharges can fail after a temperature change, mechanical shock or changes in the electrical load. Only the consequent implementation of protection devices and meticulous attention to the applicable rules and regulations for handling the respective equipment can prevent failures of electrostatic sensitive modules.

#### Shipping of modules

Modules must be shipped in the original packing material.

#### Measurements and alterations on electrostatic sensitive modules

When you are conducting measurements on electrostatic sensitive modules you should take the following precautions:

- Floating instruments must be discharged before use.
- Instruments must be grounded.

Modifying electrostatic sensitive modules you should only use soldering irons with grounded tips.



#### CAUTION!

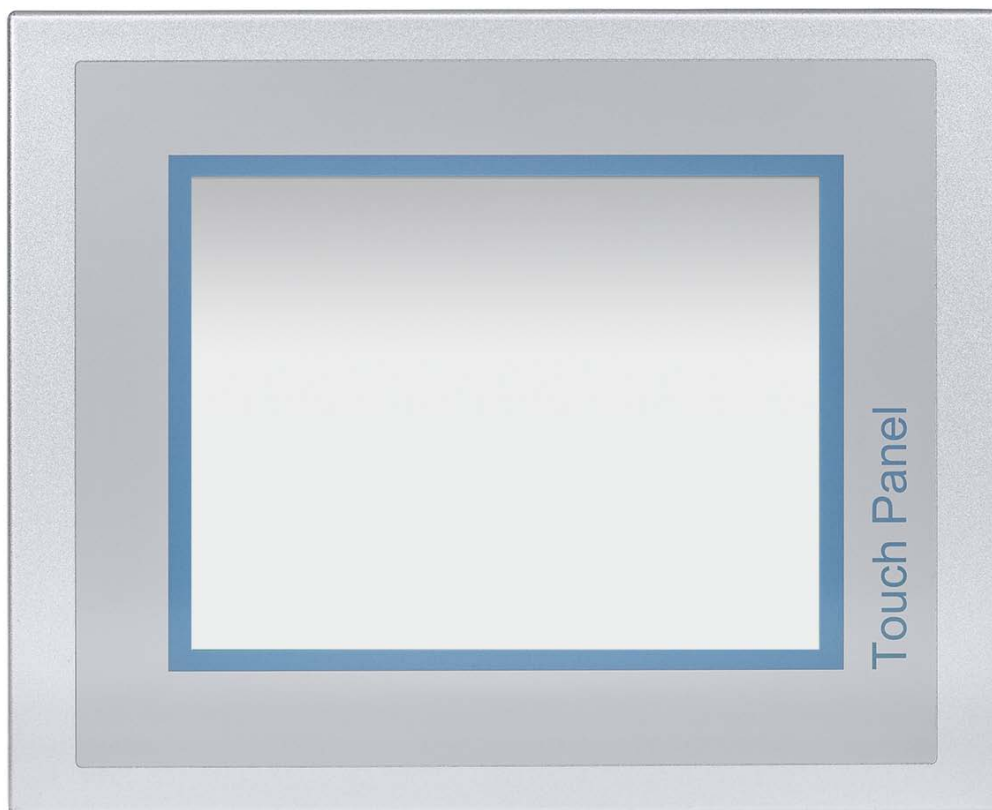
Personnel and instruments should be grounded when working on electrostatic sensitive modules.

### 2.2 Properties

#### General

The VIPA Touch Panel allows you to visualize and alter operating states and recent process values of a connected PLC. The Touch Panel is a compact and modular embedded PC based on Windows® CE. Besides the extensive Windows® CE functions the Touch Panel offers varied communication possibilities. Here the Touch Panel can simply be configured, controlled and remoted. By including a selectable HMI/SCADA runtime the Touch Panel is particularly suitable for monitoring and controlling of process cycles.





- 62K-NHC0-DH
  - Windows® CE 6.0 Core
  - Movicon 11 CE Basic (512 I/O bytes)
- 62K-NHC0-CB
  - Windows® CE 6.0 Prof.
  - Movicon 11 CE Standard (4096 I/O bytes)
- Prozessor Cortex-A8, 1000MHz
- Flash memory 128Mbyte, SDRAM 256Mbyte
- SD card slot
- RS232, RS232/RS422/RS485, USB-A- and 2 Ethernet interfaces
- MPI/PROFIBUS DP interface (optional)
- Robust aluminium case
- Display resolution 1024 x 768 / 768 x 1024
- Battery backed clock
- Resistive analog touch screen
- Easy mounting via 10 mounting clips
- Protection class IP65 (frontal)

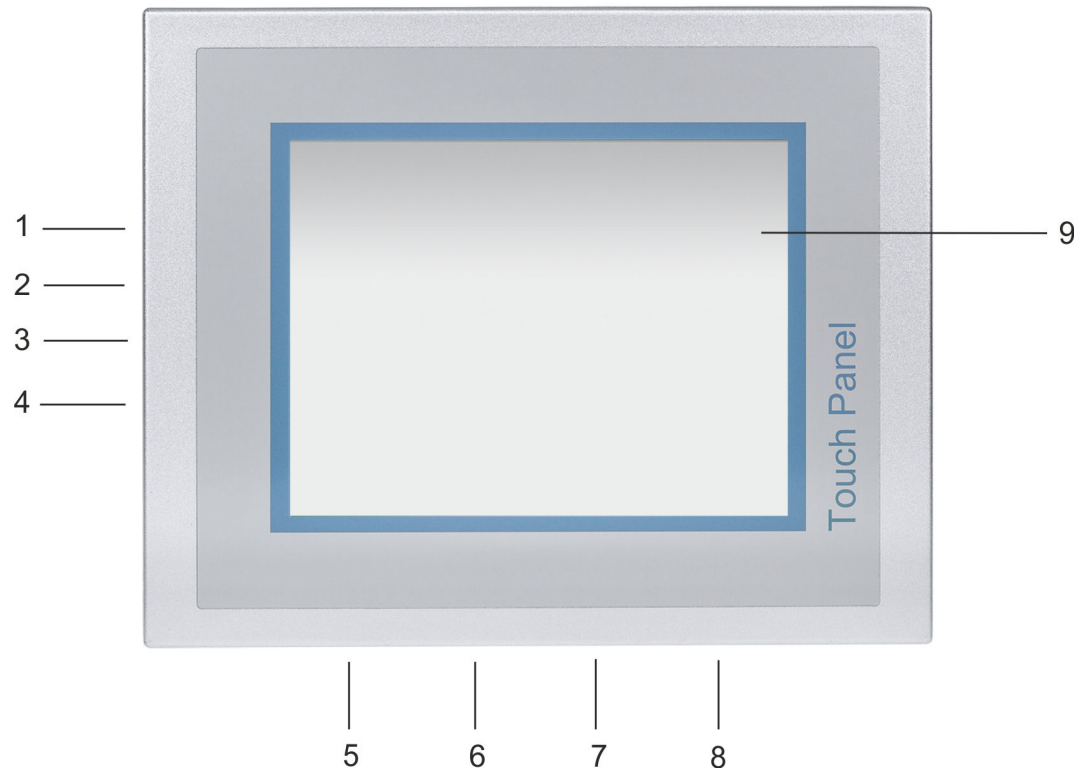
#### Order data

Type	Order number	Description
TP 610LC/+	62K-NHC0-...	10" TFT color, RS232, RS232/RS422/RS485, USB-A, 2x Ethernet RJ45
MPI/PROFIBUS DP interface	961-0MP0	MPI/PROFIBUS DP interface (optional)

## 2.3 Structure

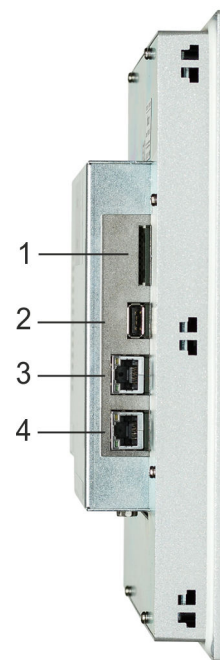
### 2.3.1 Overview

#### Front view



- 1 Slot for SD storage medium
- 2 "Host"-USB-A interface
- 3 RJ45 jack for Ethernet communication LAN 1
- 4 RJ45 jack for Ethernet communication LAN 2
- 5 RS232 interface COM 1
- 6 RS232/RS422/RS485 interface COM 2
- 7 MPI/PROFIBUS DP interface COM 3 (optional)
- 8 Slot for DC 24V voltage supply
- 9 Display with touch sensitive area (touch screen)

## Side view

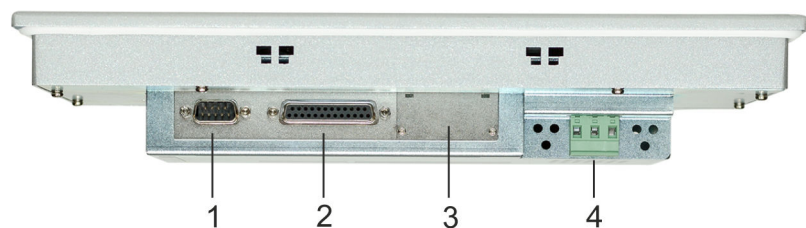


- 1 Slot for SD storage medium
- 2 "Host"-USB-A interface
- 3 RJ45 jack for Ethernet communication LAN 1
- 4 RJ45 jack for Ethernet communication LAN 2



*Please note that these two Ethernet interfaces cannot be used as a Switch!*

## Bottom view



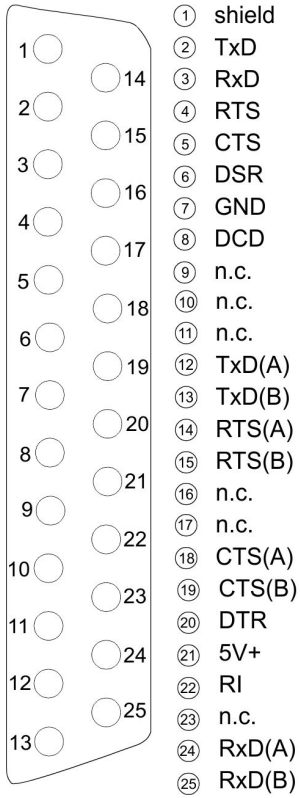
- 1 RS232 interface COM 1
- 2 RS232/RS422/RS485 interface COM 2
- 3 MPI/PROFIBUS DP interface COM 3 (optional)
- 4 Slot for DC 24V voltage supply



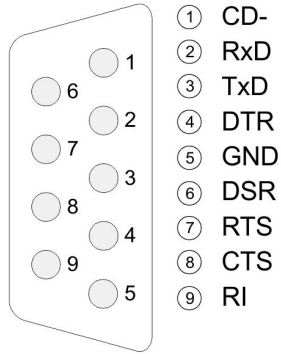
*Please make sure that the Touch Panel always has to be supplied with external voltage!*

### 2.3.2 Interfaces

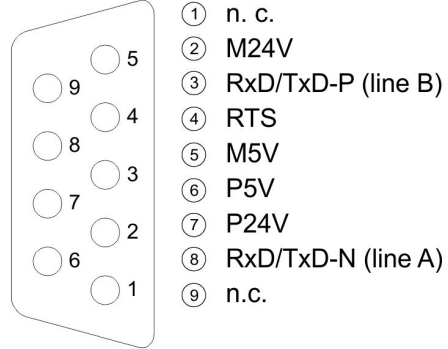
#### RS232/RS422/RS485



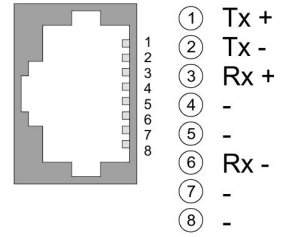
#### RS232



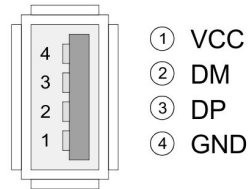
#### MPI/PROFIBUS DP



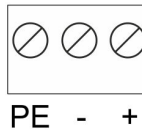
#### RJ45



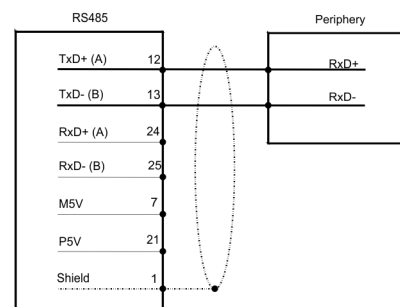
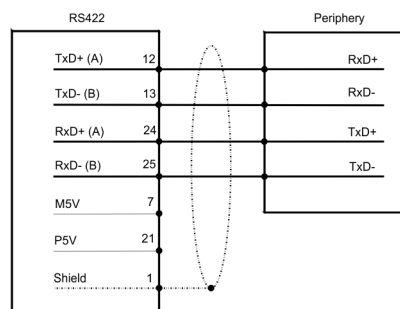
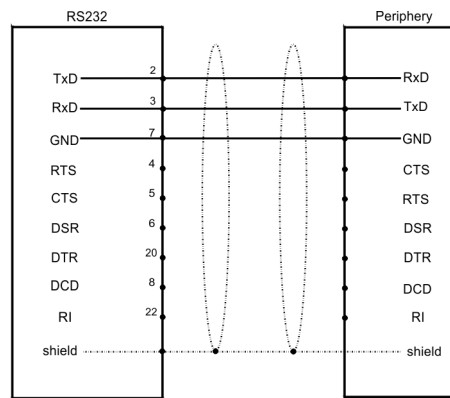
#### USB-A



#### DC 24V



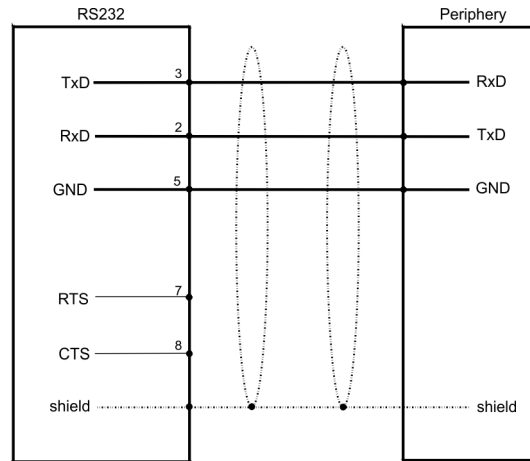
**RS232/RS422/RS485 inter-  
face**      *25 pin SubD female*



**RS232 interface**

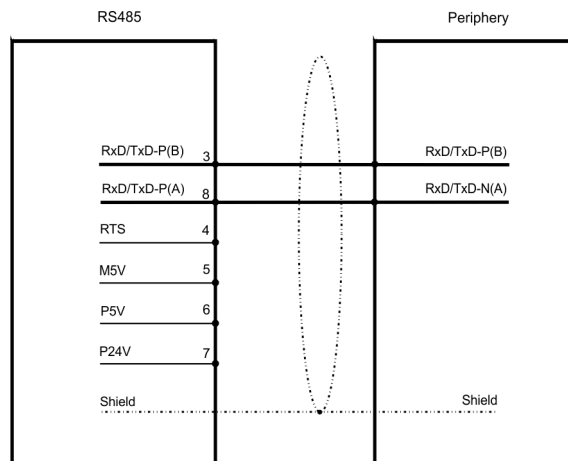
*9 pin SubD plug*

- Interface is compatible to the COM interface of a PC
- Logical signals as voltage levels
- Point-to-point links with serial full-duplex transfer in two-wire technology up to 15m distance
- Data transfer rate up to 115.2kbit/s



**MPI/PROFIBUS DP interface (optional)**

*9 pin SubD female*



**Ethernet connection**

The two RJ45 jacks provide the interface to the twisted pair cable, required for Ethernet.



*Please note that these two Ethernet interfaces cannot be used as a Switch!*

**"Host"-USB-A**

Using the "Host"-USB-A interface USB mouse, keyboard, stick or USB hard discs can be connected.

**Power supply**

The Touch Panel has got an integrated power supply. The power supply has to be provided with DC 24V (20.4 ... 28.8V). For this you find an according DC 24V slot at the back. The power supply is protected against inverse polarity and overcurrent.

### 2.3.3 Memory management

#### Overview

The following memory systems are available for every Touch Panel:

- 256Mbyte work memory
- 128Mbyte Flash disk
- USB storage media using "Host"-USB-A interface
- Slot for SD

#### Work memory

Every Touch Panel has a work memory with a size of 256Mbyte. The work memory is not buffered and is deleted after shut down. Please regard that also registry entries are stored in the work memory that are set back to default settings after the next re-boot.

#### Flash disk

As internal permanent storage medium every Touch Panel has a flash disk with a size of 128Mbyte. After the start of Windows® CE this memory is listed as *Flashdisk at My Device*.

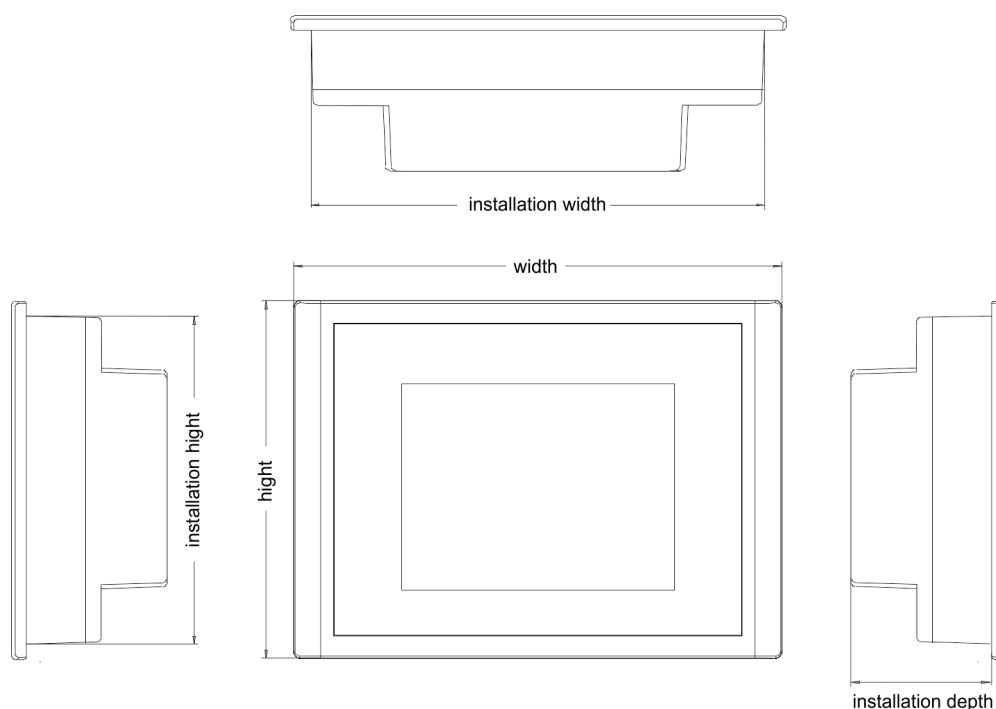
#### USB storage media

The connection of USB sticks and USB drives by use of the "Host"-USB-A interface is supported by the Touch Panel. After connection the storage media is listed as *Hard Disk at My Device*.

#### Slot for SD

At the back of the Touch Panel there are the card slots for memory cards. At this slot you may plug storage modules of the type SD. The card may be plugged and removed during runtime and is immediately listed as *SDMMC Card at My Device*.

## 2.4 Dimensions



#### Installation dimensions

For the installation of the Touch Panel in control cabinets and desks the following dimensions are necessary:

## Dimensions

## 10" - 62K-NHC0-...

Front panel width	2.5 ... 6mm
Installation cutting (B x H)	311 x 249mm
Front panel (B x H)	325 x 263mm
Rear panel (B x H x T)	310 x 248 x 50mm
Installation depth	50mm



*The degrees of protection are only guaranteed when the following is observed:*

- *Material thickness at the mounting cut-out: 2.5 ... 6mm*
- *The deviation from the plane for the panel cut-out is  $\leq 0.5\text{mm}$ .*
- *Permissible surface roughness in the area of the seal:  $\leq 120\mu\text{m}$  (friction coefficient 120)*



## 2.5 General data

### Conformity and approval

Conformity		
CE	2014/35/EU	Low-voltage directive
	2014/30/EU	EMC directive
Approval		
UL		See Technical Data
others		
RoHS	2011/65/EU	Restriction of the use of certain hazardous substances in electrical and electronic equipment

### Protection of persons and device protection

Type of protection	-	IP20
Electrical isolation		
to the field bus	-	electrically isolated
to the process level	-	electrically isolated
Insulation resistance		-
Insulation voltage to reference earth		
Inputs / outputs	-	AC / DC 50V, test voltage AC 500V
Protective measures	-	against short circuit

### Environmental conditions to EN 61131-2

Climatic		
Storage / transport	EN 60068-2-14	-20...+60°C
Operation		
Horizontal installation	EN 61131-2	0...+50°C
Vertical installation	EN 61131-2	0...+50°C
Air humidity	EN 60068-2-30	RH1 (without condensation, rel. humidity 10...95%)
Pollution	EN 61131-2	Degree of pollution 2
Mechanical		
Oscillation	EN 60068-2-6	1g, 9Hz ... 150Hz
Shock	EN 60068-2-27	15g, 11ms

### Mounting conditions

Mounting place	-	In the control cabinet
Mounting position	-	Horizontal and vertical

EMC	Standard	Comment	
Emitted interference	EN 61000-6-4	Class A (Industrial area)	
Noise immunity zone B	EN 61000-6-2	Industrial area	
		EN 61000-4-2	ESD 8kV at air discharge (degree of severity 3), 4kV at contact discharge (degree of severity 2)
		EN 61000-4-3	HF field immunity (casing) 80MHz ... 1000MHz, 10V/m, 80% AM (1kHz) 1.4GHz ... 2.0GHz, 3V/m, 80% AM (1kHz) 2GHz ... 2.7GHz, 1V/m, 80% AM (1kHz)
		EN 61000-4-6	HF conducted 150kHz ... 80MHz, 10V, 80% AM (1kHz)
		EN 61000-4-4	Burst, degree of severity 3
	EN 61000-4-5	Surge, degree of severity 3 *	
*) Due to the high-energetic single pulses with Surge an appropriate external protective circuit with lightning protection elements like conductors for lightning and overvoltage is necessary.			

## 2.6 Technical data

### 2.6.1 62K-NHC0-DH

Order no.	62K-NHC0-DH
Type	Touch Panel TP 610LC
<b>Display</b>	
Display size (diagonal)	10 "
Display size (width)	203 mm
Display size (height)	152 mm
Resolution	768 x 1024 / 1024 x 768
Aspect ratio	4:3
Type of display	TFT color (64K colors)
MTBF Backlights (25°C)	50000 h
<b>System properties</b>	
Processor	Cortex-A8 1000 MHz
Operating system	Windows CE 6.0 Core
User software	Movicon 11 CE Basic
Work memory	256 MB
User memory	128 MB
Available memory (user data)	40 MB
SD/MMC Slot	✓

Order no.	62K-NHC0-DH
CF Card Slot Typ II	-
<b>Time</b>	
Real-time clock buffered	✓
Clock buffered period (min.)	26 w
Type of buffering	Manganese Rechargeable Lithium Battery
Load time for 50% buffering period	5 h
Load time for 100% buffering period	24 h
Accuracy (max. deviation per day)	2 s
<b>Operating controls</b>	
Touchscreen	resistive
Keyboard	external via USB
Mouse	external via USB
<b>Interfaces</b>	
MPI, PROFIBUS-DP	optional
MPI, PROFIBUS-DP connector	-
Serial, COM1	RS232
COM1 connector	Sub-D, 9-pin, male
Serial, COM2	RS232 / RS422 / RS485
COM2 connector	Sub-D, 25-pin, female
Number of USB-A interfaces	1
USB-A connector	USB-A (host)
Number of USB-B interfaces	-
USB-B connector	-
Number of ethernet interfaces	2
Ethernet	Ethernet 10/100 MBit
Ethernet connector	RJ45
Integrated ethernet switch	-
<b>Technical data power supply</b>	
Power supply (rated value)	DC 24 V
Power supply (permitted range)	DC 20.4...28.8 V
Reverse polarity protection	✓
Current consumption (no-load operation)	0.24 A
Current consumption (rated value)	1.36 A
Inrush current	85 A
I <sup>2</sup> t	0.34 A <sup>2</sup> s
Power loss	15 W

Technical data &gt; 62K-NHC0-CB

Order no.	62K-NHC0-DH
<b>Status information, alarms, diagnostics</b>	
Supply voltage display	none
<b>Mechanical data</b>	
<b>Housing / Protection type</b>	
Material	aluminum, galvanized steel
Mounting	mounting clips
Protect type front side	IP 65
Protect type back side	IP 20
<b>Dimensions</b>	
Front panel	325 mm x 263 mm x 6 mm
Rear panel	310 mm x 248 mm x 50 mm
<b>Installation cut-out</b>	
Width	311 mm
Height	249 mm
Minimum	2.5 mm
Maximum front panel thickness	6 mm
Weight	3350 g
<b>Environmental conditions</b>	
Operating temperature	0 °C to 50 °C
Storage temperature	-20 °C to 60 °C
<b>Certifications</b>	
UL certification	yes
KC certification	yes

### 2.6.2 62K-NHC0-CB

Order no.	62K-NHC0-CB
Type	Touch Panel TP 610LC+
<b>Display</b>	
Display size (diagonal)	10 "
Display size (width)	203 mm
Display size (height)	152 mm
Resolution	768 x 1024 / 1024 x 768
Aspect ratio	4:3
Type of display	TFT color (64K colors)
MTBF Backlights (25°C)	50000 h

Order no.	62K-NHC0-CB
<b>System properties</b>	
Processor	Cortex-A8 1000 MHz
Operating system	Windows CE 6.0 Prof.
User software	Movicon 11 CE Standard
Work memory	256 MB
User memory	128 MB
Available memory (user data)	25 MB
SD/MMC Slot	✓
CF Card Slot Typ II	-
<b>Time</b>	
Real-time clock buffered	✓
Clock buffered period (min.)	26 w
Type of buffering	Manganese Rechargeable Lithium Battery
Load time for 50% buffering period	5 h
Load time for 100% buffering period	24 h
Accuracy (max. deviation per day)	2 s
<b>Operating controls</b>	
Touchscreen	resistive
Keyboard	external via USB
Mouse	external via USB
<b>Interfaces</b>	
MPI, PROFIBUS-DP	optional
MPI, PROFIBUS-DP connector	-
Serial, COM1	RS232
COM1 connector	Sub-D, 9-pin, male
Serial, COM2	RS232 / RS422 / RS485
COM2 connector	Sub-D, 25-pin, female
Number of USB-A interfaces	1
USB-A connector	USB-A (host)
Number of USB-B interfaces	-
USB-B connector	-
Number of ethernet interfaces	2
Ethernet	Ethernet 10/100 MBit
Ethernet connector	RJ45
Integrated ethernet switch	-
<b>Technical data power supply</b>	

Technical data &gt; 62K-NHC0-CB

Order no.	62K-NHC0-CB
Power supply (rated value)	DC 24 V
Power supply (permitted range)	DC 20.4...28.8 V
Reverse polarity protection	✓
Current consumption (no-load operation)	0.24 A
Current consumption (rated value)	1.36 A
Inrush current	85 A
I <sup>2</sup> t	0.34 A <sup>2</sup> s
Power loss	15 W
<b>Status information, alarms, diagnostics</b>	
Supply voltage display	none
<b>Mechanical data</b>	
<b>Housing / Protection type</b>	
Material	aluminum, galvanized steel
Mounting	mounting clips
Protect type front side	IP 65
Protect type back side	IP 20
<b>Dimensions</b>	
Front panel	325 mm x 263 mm x 6 mm
Rear panel	310 mm x 248 mm x 50 mm
<b>Installation cut-out</b>	
Width	311 mm
Height	249 mm
Minimum	2.5 mm
Maximum front panel thickness	6 mm
Weight	3350 g
<b>Environmental conditions</b>	
Operating temperature	0 °C to 50 °C
Storage temperature	-20 °C to 60 °C
<b>Certifications</b>	
UL certification	yes
KC certification	-

## 3 Deployment under Windows CE 6.0 Core

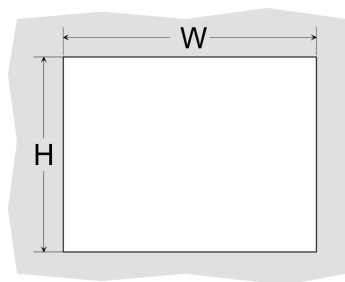
### 3.1 Installation

#### Overview

The Touch Panel is suitable for the installation in operating tables and control cabinet fronts. The installation happens via the back. The Touch Panel is provided with a patented fixing technique that allows an easy connection with a hexagon socket key. A fast and easy device change is possible.

#### Installation cutting

For the installation into a operating tableau and control cabinet fronts, the Touch Panel requires the following front plate cutting:

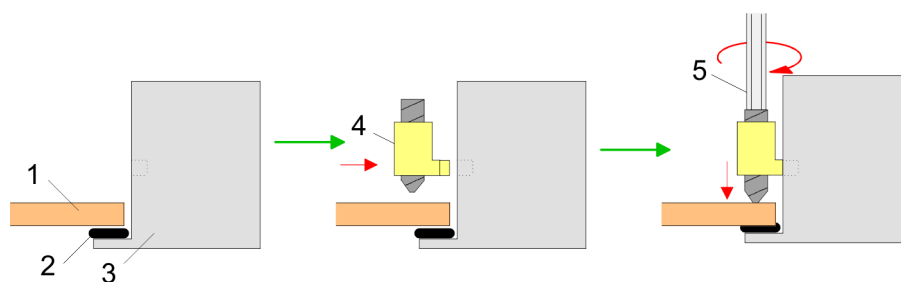


Touch Panel	W x H in mm
62K-NHC0-...	311 x 249mm

#### Installation

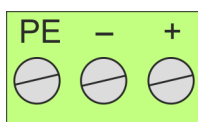
For the installation of the panel, 4 mounting clips and a small hexagon socket key are required.

1. ➤ Push the operator panel [3] from the front side into the front panel cutting [1] until it touches the panel with the seal [2].
2. ➤ Put the mounting clips [4] on all four sides of the panel into the openings. The screws should point in the direction of the front panel.
3. ➤ Screw the screws from the other side with the hexagon socket key [5].



#### Connect power supply

For the cabling of the DC 24V power supply a green plug is used. The connector is a plug with screw contacts. The plug has the following assignment:



- + DC 24V
- DC 0V
- PE Protective earth

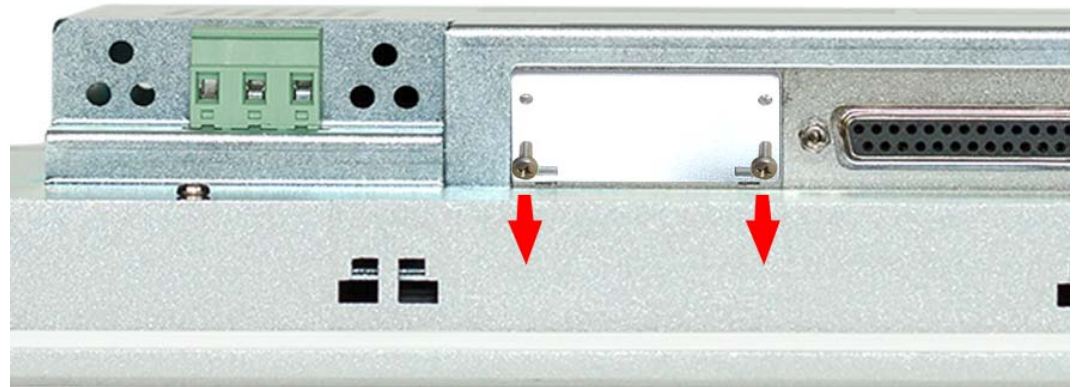
## 3.2 Installation of the optional MPI/PROFIBUS DP interface



### CAUTION!

Personnel and instruments should be grounded when working on electrostatic sensitive modules! Take the interface module only at the holding plate and avoid touching the board! Store respectively send the interface module always in the corresponding ESD packaging!

### Installation

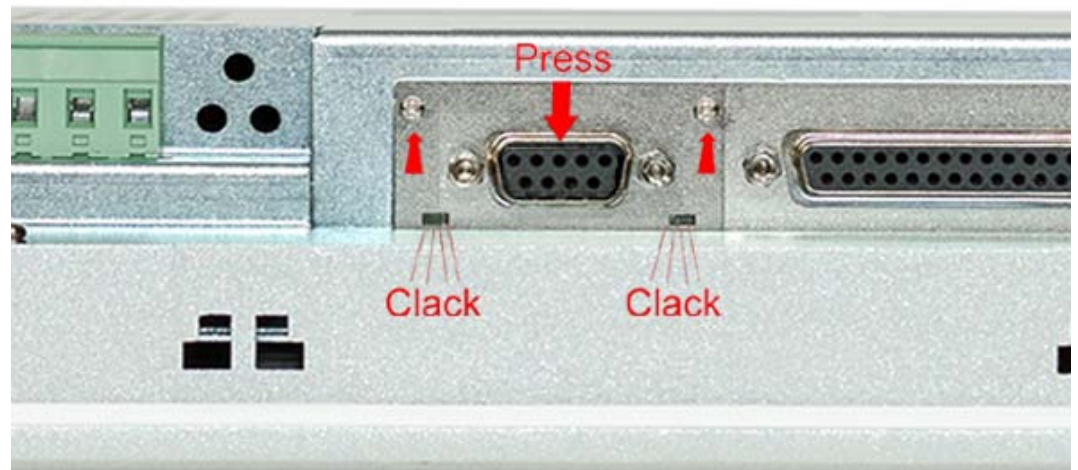


1. Remove the cover plate of the COM3 port by removing the screws and pulling the plate.



2. For installation insert the interface module into the opening. Push the interface module in the device until the holding plate fits to the housing. Here the interface module is put into the right position by 2 inner guide rails.





3. Now press the interface module downwards until the holding plate snaps into the lugs.



*Please consider that the holding plate always snaps to the lugs, otherwise the holding plate can not be screwed!*



4. Mount the screws again.

After installation the interface module is automatically recognized and can be configured.

## Demounting

1. Remove the screws.
2. Push the holding plate from the lugs. Use a screwdriver by inserting it gently between the housing and holding plate.
3. Pull the interface module out of the device.
4. Reinstall the cover plate.

### 3.3 Commissioning



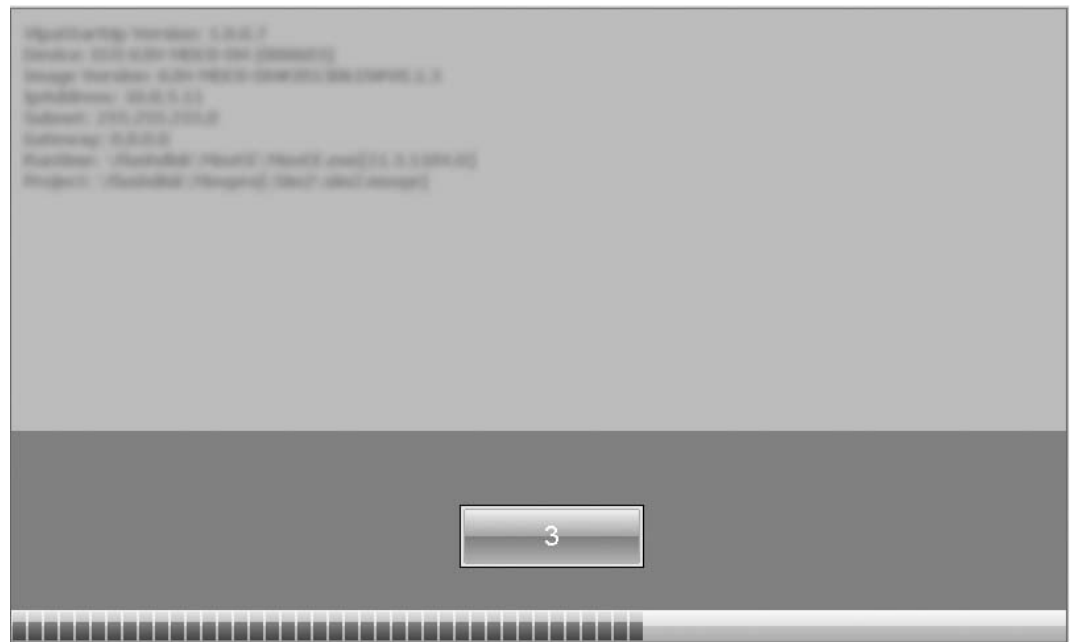
#### CAUTION!

- Before commissioning the device must be brought to room temperature.
- At condensation the device must be absolutely dry before connected to power.
- To avoid overheat during operation the device must not be laid open to direct sun light.
- After opening the control cabinet or desk, there are parts with possible dangerous voltage available.
- For all signal connections only screened cables are permitted.
- Signal cables must not be let within the same cable shaft as high voltage cables.

#### 3.3.1 VIPA Startup-Manager

##### Start screen

As soon as the Touch Panel is provided by power supply, the *VIPA Startup-Manager* will be loaded. At the first startup of the *VIPA Startup-Manager* the following *start screen* appears.



- There is a button on the *initial screen* with a counter, which counts backwards. If you click on this button within this time, you can return to the *selection menu*. If the time expires, the project will start automatically.
- A delay time of 5 seconds is default. In the *selection menu* at "Autostart" you can adjust this time.

##### Selection menu

There are following buttons in the *selection menu*:

- Settings
- Info/Update
- Autostart
- Exit
- Back

**Settings**

In [Settings] the system settings like brightness and contrast of the display can be preset or the display can be re-calibrated. Here the MPI/DP slave interface can also be configured. Further you get here the Touch Panel information: product number, serial number and licenses.

**Info/Update (firmware)**

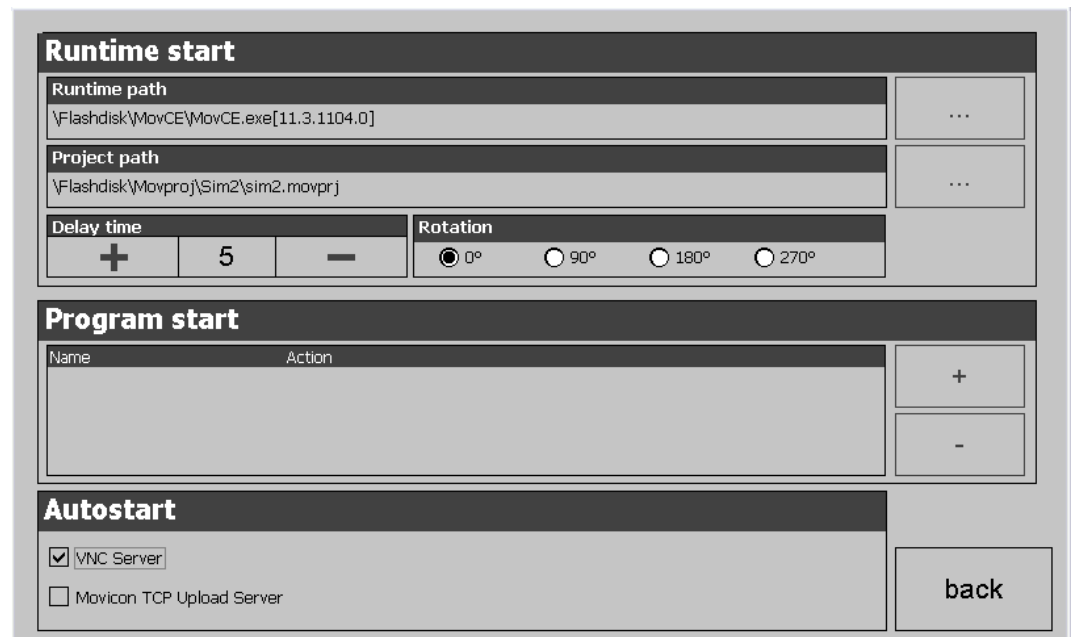
- To execute the firmware update press the button [Info/Update]. After clicking on [Info/Update] the current image is displayed under "image version" with panel name, creation date and version number.
- With [Make Screen Shot] you can make a screen shot of the panel information and select a destination for its storage.
- With [Search Image] a list of all the firmware images is shown, which are available on the panel and connected storage media. These images will be listed with create data and version number. Choose your new image.

If the select image is not suited for your panel, an error message appears. If the image is suited for your panel, in the following message the current installed image version and the new selected image version are listed.

1. Click on [Make Image Update] to execute the update. This can take a few seconds.
2. In the following window click on [Finish] to end the update.
  - ⇒ Then the display gets dark.
3. Switch the power supply off the panel off and on.
  - ⇒ After the restart the calibration window is opened.
4. Re-calibrate your panel as described. After calibration tap anywhere at the screen.
  - ⇒ The calibration window is closed.
5. Via 'Start → Settings → Control Panel' start the program *AutoRunMaker*.  
 ↪ Chapter 3.4 'Installation Movicon and Startup-Manager' on page 28

**Autostart**

With [Autostart] you define which runtime and which project will be started automatically together with the panel startup.

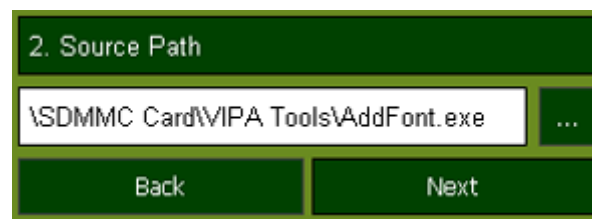


- With [...] at "Runtime path" res. "Project path" all existing runtimes res. projects on the panel and the storage media will be listed.
- At "Delay Time" you can adjust a delay time > 0 by using the buttons [+] and [-]. 5 seconds are default.
- Via "Rotation" the orientation of the panel can be changed.

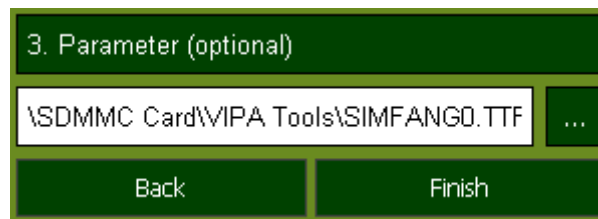
Via "Program start" with [+] you can add programs, which have to start automatically.



1. Select "start" and assign a name for the program.



2. Upload your program with [...].



3. You can optionally set parameters.
4. Exit with [Finish].

- On Windows® CE, with "Copy" [...] files on the panel from a source path to a destination path.
- With "Autostart" you can select the automatic startup of the VNC server and the Movicon-TCP upload server. With [back] you can return to the selection menu.

#### Exit

The *Startup-Manager* will be closed by [Exit] and the system returns to the Windows® screen.

#### Back

With [Back] you get back to the start screen of the *Startup-Manager*.

## 3.4 Installation Movicon and Startup-Manager

### Overview

After an image update it is necessary to re-install *Movicon* and *Startup-Manager*. The current data can be found in the service area of [www.vipa.com](http://www.vipa.com).


For the Panel 62K-NHC0-... the directory *VIPA* and the file *AutoRunMaker.cfg* is necessary of the following zip file:

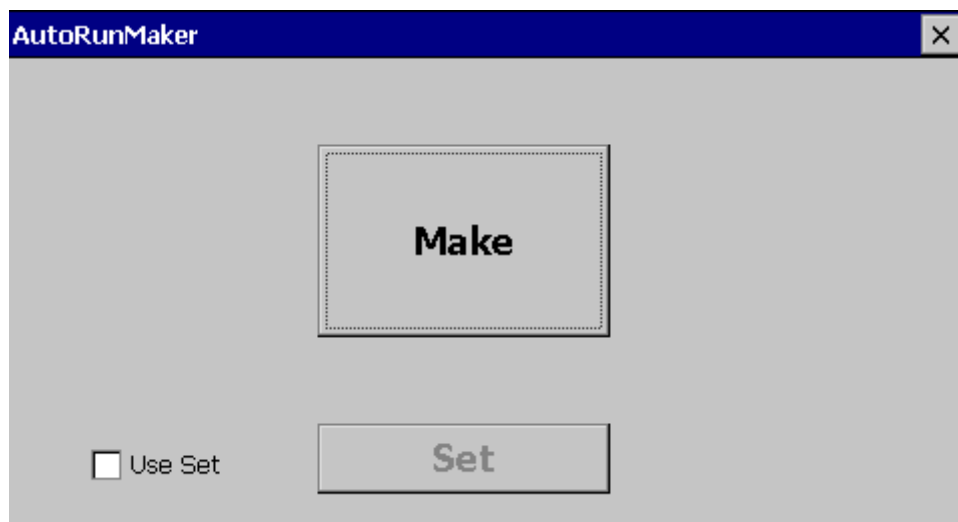
- **62K-NHC0-...\_install\_SD\_Card\_Vxxx.zip**



*Before the installation can be established you have to stop all the running programmes. This also applies to programmes which are running in the background, such as the transport service of Movicon (CEUpload-Server.exe).*

## Proceeding

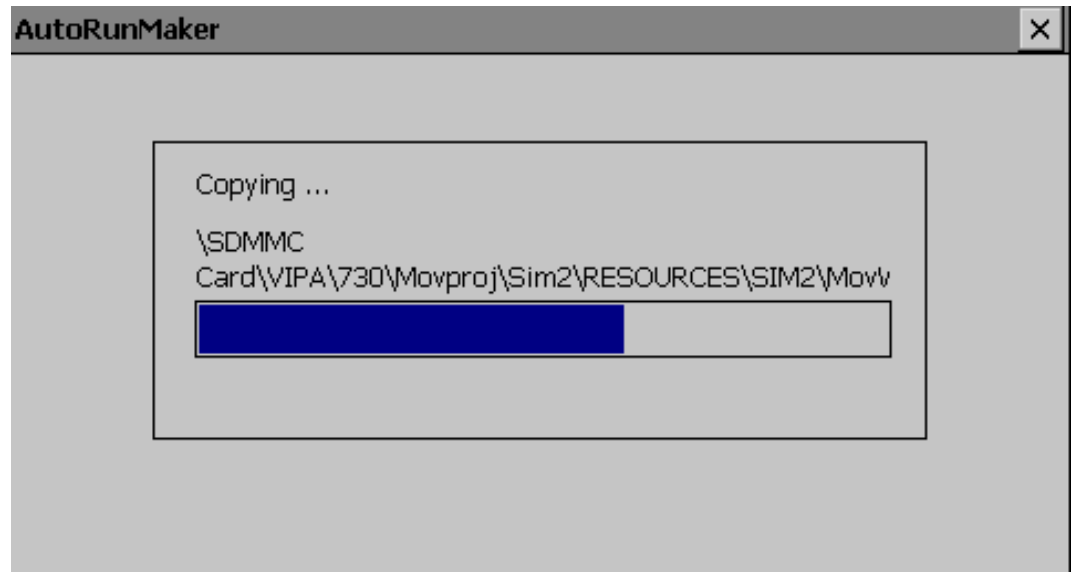
1. Call [www.vipa.com](http://www.vipa.com)
2. Click 'Service Support → Downloads → Firmware'.
3. Via 'HMI → TP → ECO(+) Panels' navigate to your Panel and download the zip file to your PC.
4. Unzip the zip file and copy the file to the root directory of your SD card.
5. Switch-on the panel, install the SD card and select via 'Start → Settings' Control Panel.
6. Start in the Control Panel the program "AutoRunMaker" via double-click on the following symbol .  
⇒ After start-up the following window appears.



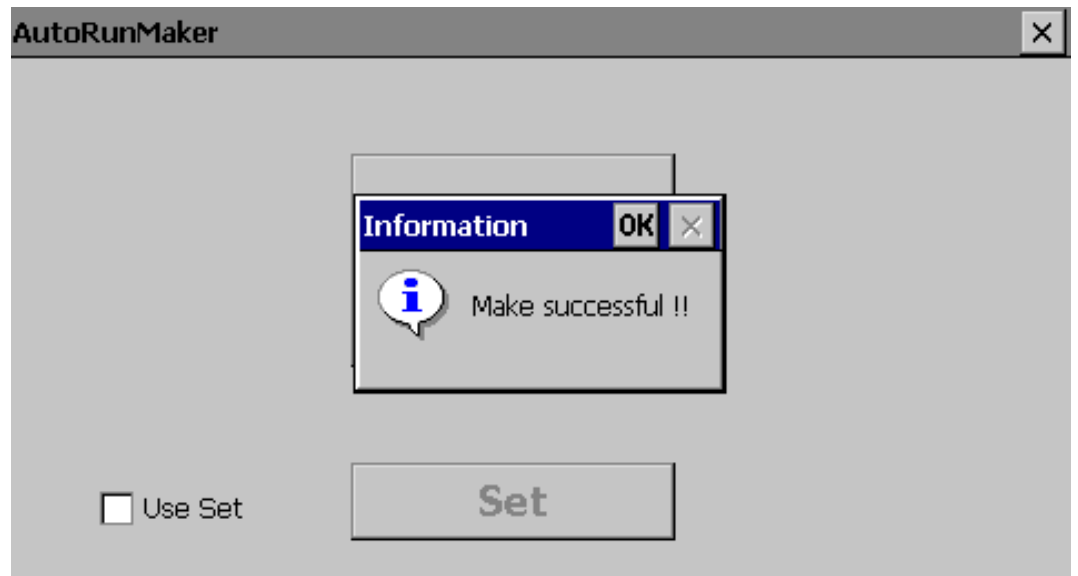
**7.** Click [Make].

⇒ All the necessary files are copied and the registry is accordingly adjusted.

The progress is displayed in a new window.

**8.** Please wait a moment.

⇒ After successful execution the following completion screen appears.

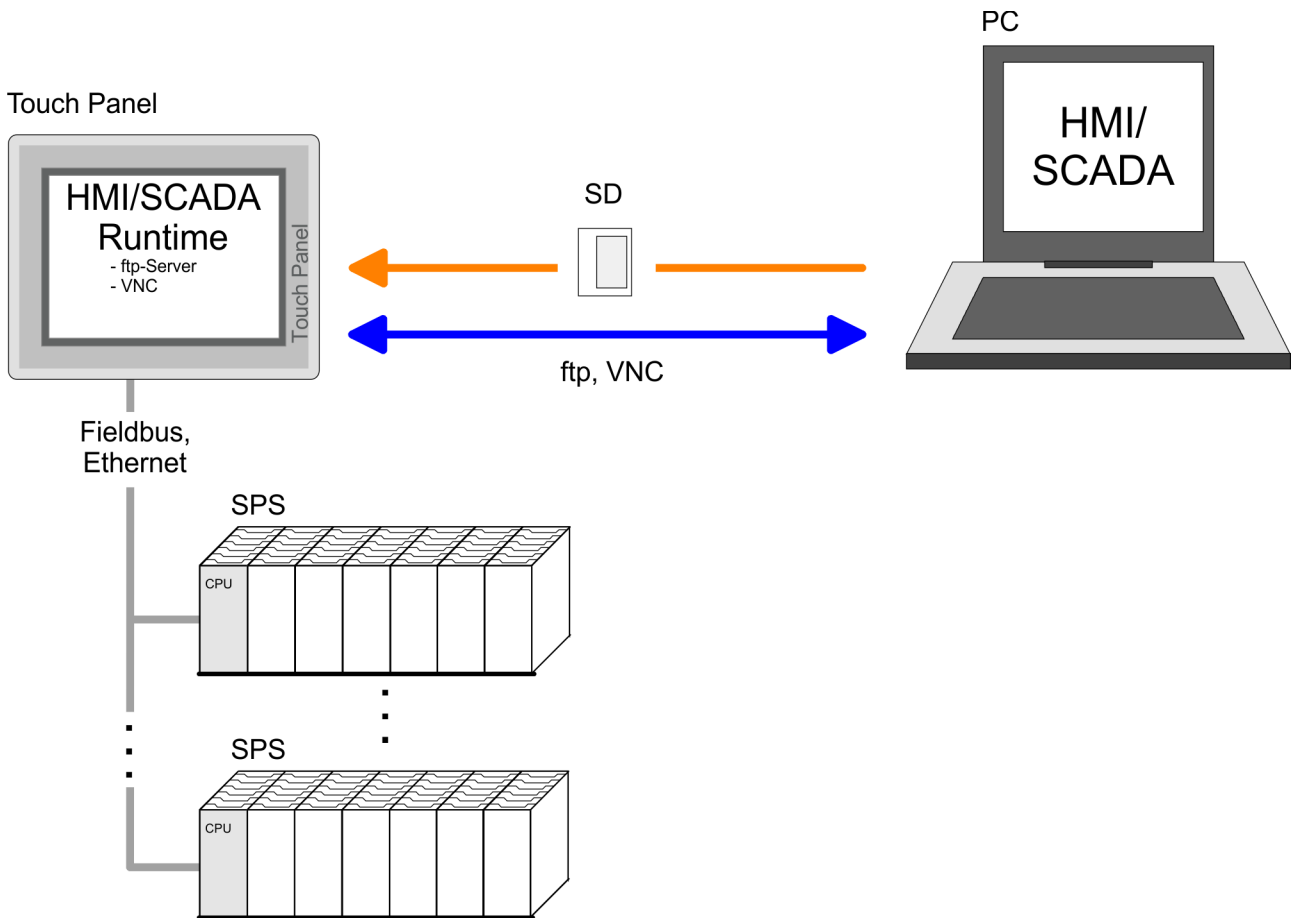
**9.** Confirm this window with [OK], remove the SD card and re-start the panel.

⇒ The panel should start with the Startup-Manager after the restart.

### 3.5 Connection to a PLC system

**Overview**

- For the inclusion into your PLC system several HMI/SCADA project-engineering platforms are at your disposal that has to be installed at an external PC. Here you may create your project, where appropriate simulate it and transfer it to the Touch Panel via a connection that you've entered before. Via the at the Touch Panel pre-installed runtime version of the HMI/SCADA project engineering platforms your project is run able.
- By using the according communication driver, the Touch Panel supports connecting options to the PLC via field bus and Ethernet.
- During operation your operating device communicates with the according PLC and reacts to the application courses in the PLC according to the configured processes. Via dialogues configured before, process values may be monitored graphically, altered and evaluated.



### 3.6 Operating system Windows® Embedded CE 6.0 Core

**3.6.1 General**

- The newly developed standard Windows® CE allows devices that are communicating with each other to exchange information with Windows® based devices and to establish connections to the Internet.
- Microsoft Windows® CE is a 32bit, open and scalable platform for a multiplicity of communication and data processing devices. The functions like multi-tasking and multi-threading are supported by this operating system.

**Windows® Embedded CE 6.0 Core**

Windows® CE 6.0 Core is a Windows® operating system reduced to the absolute essentials with mouse operation (touch screen) that requires only small hardware resources.

**Properties**

- ftp and VNC server
- Registry Editor
- USB keyboard driver
- VIPA Startup Manager

**Differences to the standard Windows® operation**

Please note that for the deployment of Windows® CE a profound knowledge of operating Windows® is assumed. Here are only shown the differences to a "standard" Windows® operating system.

- *Pen entry*  
You're operating the Touch Panel by means of a pencil res. with the finger. When touching an area at the touch screen this area is recognized and the program reacts accordingly. The following types of entry are differentiated:
- *Double click*  
A double click has to be executed like mouse operation by touching the area at the screen twice. A double click on an object opens res. executes this.
- *Drag*  
By tapping on an object and then dragging you may move the object on the screen. If no object is selected, a frame is created by the dragging that selects the touched objects.

**Navigation within the dialog window**

The windows may be moved via the head bar. Here you may also find the [OK] button to confirm entries and the [X] button for exiting the dialog.

**Exit Windows® (shut down)**

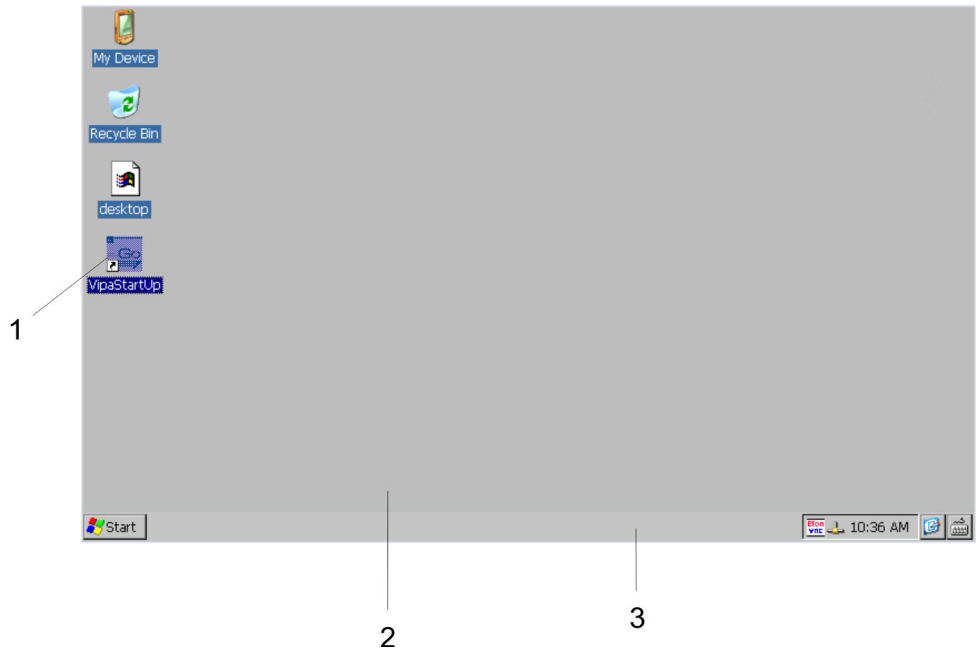
You may not exit Windows®. By switching the power supply off and on again you may restart Windows®. Before a reboot you should always save your data res. close all running applications to avoid data loss.



*Please note that changes are stored automatically after 30 seconds. For manual storage, please use the "suspend" function, to be found in the start menu.*



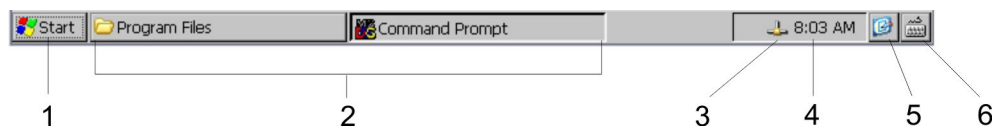
### 3.6.2 Structure



1	<i>Icon</i>	Via icons on the desktop you gain direct access to the application related to the icon.
2	<i>Desktop</i>	The desktop is the screen that is shown after login at Windows® CE. It contains e.g. links to the mostly used applications res. system components.
3	<i>Task bar</i>	The task bar is part of the desktop. When opening an application, a document or a window, every running object is displayed as button on the task bar. Via this buttons you may easily change between the open windows.


#### Taskbar

Basically the taskbar has the following structure:

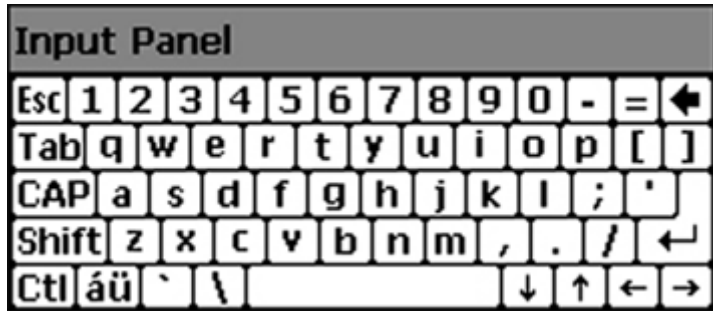


1	<i>Start button</i>	This button offers you access to all components of your Touch Panel like e.g. applications, system settings, file browser etc.
2	<i>Open applications</i>	For every open application a button is to be found in the task bar. There is no button for minimizing. The switch between the applications is performed via this buttons.
3	<i>Network connection</i>	As soon as your Touch Panel is connected via Ethernet you can see here the Ethernet address. If there is no connection via Ethernet, the symbol is displayed crossed out.
4	<i>Time</i>	This area shows the time that you may change via double click.
5	<i>Show desktop</i>	All windows are minimized and the desktop is shown.
6	<i>Software keyboard</i>	This button displays a keyboard at the screen. "Hide Input Panel" hides the keyboard again.

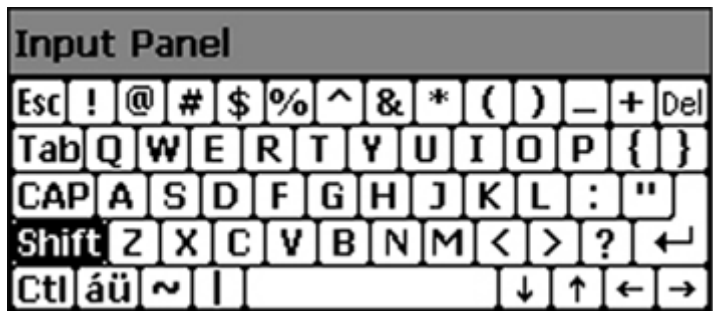
**Software keyboard**

The button  allows you to select one of the available software keyboards. At the moment the following standard keyboards are implemented:

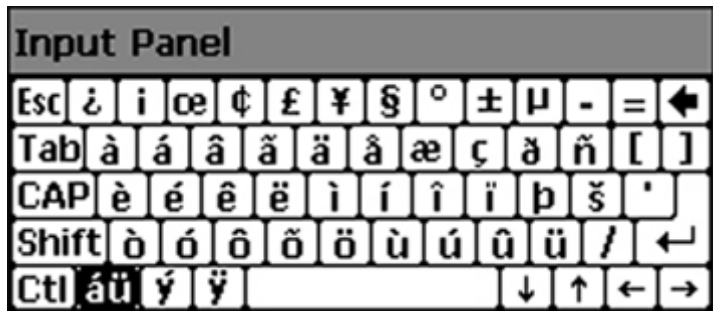
**Keyboard**



At pushed Shift key:



At pushed [a´ü] key:



Please note that äöü can exclusively be entered via the software keyboard "Keyboard".

**Large KB**



At pushed Shift key:

Input Panel															
Esc	F1	F2	F3	F4	F5	F6	F7	F8	F9	F10	F11	F12	Home	End	Prop
~	!	@	#	\$	%	^	&	*	(	)	_	+	BS		
Tab	Q	W	E	R	T	Y	U	I	O	P	{	}			
Caps Lock	A	S	D	F	G	H	J	K	L	:	"		return		
Shift	Z	X	C	V	B	N	M	<	>	?	up		pgup		
Ctrl	win	Alt							ins	del	lt	dn	rt	pgdn	

**Meaning****Home** Position 1**End** End**BS** Backspace**up** ↑**dn** ↓**lt** ←**rt** →**pgup** Page ↑**pgdn** Page ↓**ins** Insert**del** Delete**Tab** Tabulator**Shift****Caps/Lock****Hide keyboard**

The software keyboard allows you to enter key entries without connecting an external keyboard. As soon as an entry is required the software keyboard is automatically shown. *Hide Input Panel* hides the keyboard again.

**System setting (Control Panel)**

As many components of the *Control Panel* conform with the *system control* of Windows®, most of the description is not necessary. The description of the control panel components relevant for operating the Touch Panel can be found in the following:

- **Set display**  
Via 'Start → Settings → Control Panel → Display' the dialog windows for the display properties opens. Here you may change the settings for the monitor options. For example you may adjust the brightness and contrast via the register *Settings*.
- **Calibrate touch screen**  
If the touch screen does not always react to a double click or not precisely recognize the position of an entry, you can call the dialog *Stylus* via 'Start → Settings → Control Panel'. In the register *Double-Tap* you can use the grid pattern to preset a double click velocity and test this on the symbol below. Click [OK] to accept the value. The calibration of the touch screen is completed via the register *Calibration* by following the instructions.

- **Set Ethernet parameters**  
The dialog field for pre-setting an Ethernet address is to be found at 'Start → Settings → Network and Dial-up Connections'. The default setting is address assignment via DHCP.



*Please consider with the manual assignment of IP addresses that these are not identical for both interfaces. If you accidentally have assigned to the same IP address to both interfaces, then only one interface icon is shown at 'Network and Dial-up Connections'. By switching to DHCP, you receive 2 Interface icons again and can configure them individually.*

- **System properties (System)**  
Here you receive information about the version of the current Windows® operating system, the memory load and sharing (alterations here are not taken over into the registry) and about the copyright. The register Device Name allows you to change the *device name* that is e.g. shown during Ethernet communication.
- **Set the back-lighting**  
Via 'Start → Settings → Control Panel → Power Properties' you may set the break time and the dimming of the back-lighting. For this choose AC Power at "Power Scheme" and then set the appropriate time.



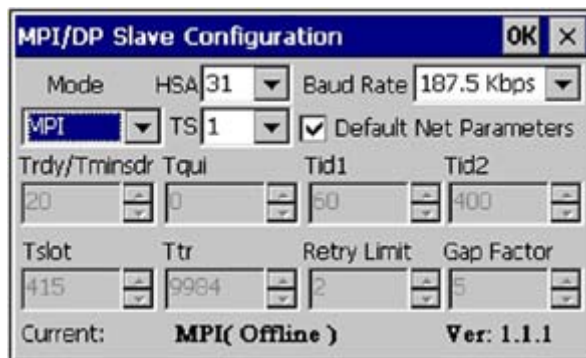
*A set suspend mode shuts down the Touch Panel completely. By switching the power supply off and on again you can restart the Touch Panel.*

**Configuration MPI/DP slave**

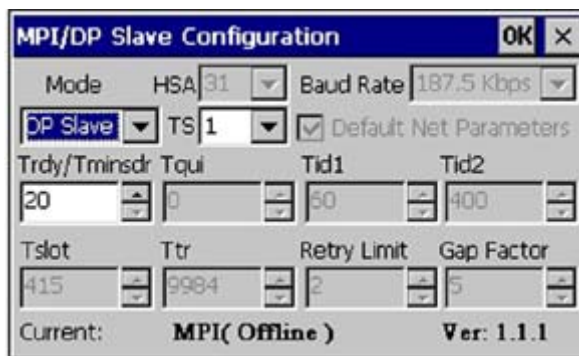
To configure the optional MPI/DP interface on the Touch Panel start via 'Start → Settings → Control Panel' or via 'Settings' in the *VIPA Startup-Manager* the tool "MPI/DP Slave Configuration".

- Default: MPI - Address 1

The following settings are only required if not communicate via Movicon.



Via 'mode' the interface could be set up on "DP slave".



The use of the optional MPI/PROFIBUS interface is required.

## 3.7 Integrated Server

### 3.7.1 General

#### Login data

The Touch Panel has several integrated server that enable a remote maintenance within a network. Some servers only allow access by means of entering *User name* and *Password*. The following login data are used standardly:

- User name: **wince**
- Password: **vipatp**

#### Overview

Per default the following server are integrated:

- ftp server (activated)
- VNC (not activated)

#### Phrases

Phrases that are used in the description of the server:

#### Client

A client is an application that uses the service of a server within a network. For example, a web browser is a client because at every call of a website it sends a request to a web server and receives an answer.

#### Server

A server is an application that waits for the contact request of a client application and exchanges messages with it after contact start. This communication type is called Client-Server communication.

#### Host

Computer within a network where at least one server is running.

#### Download

Data transfer Server → Client

#### Upload

Data transfer Client → Server

### 3.7.2 ftp server

By means of a ftp server data between client and server can be exchanged. Here you can copy, delete or create files and directories.

#### Conditions for ftp access

Depending on the ftp client your PC must have the following conditions for a ftp connection. If there are still problems with the ftp access please ask your system administrator.

Internet Explorer


- ftp access possible with version 5.5 or higher
- activate directory view for ftp sites

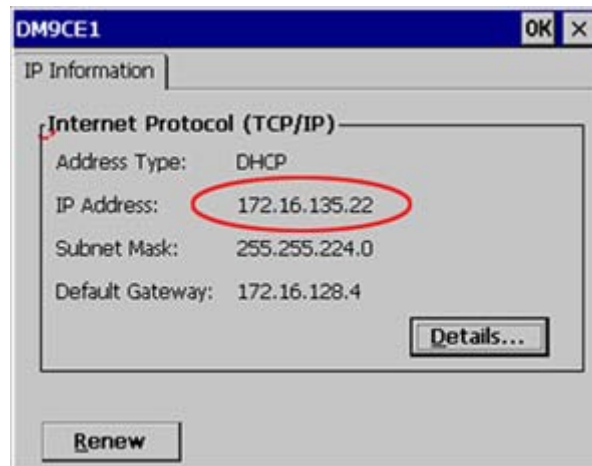
For the adjustment choose in the Internet Explorer 'Options → Internet options', register "extended" in the area "Browsing" and set the following settings:

1. activate: "activate directory view for ftp sites"
2. Restart the Internet Explorer.
  - ⇒ The settings are saved.

#### Establishing a ftp connection

Below is explained, how to establish of a ftp connection between a Windows® based PC with Windows Explorer as ftp client and your Touch Panel.

1. Connect your Touch Panel with the network where your PC is a member via an Ethernet cable.
2. Switch on your Touch Panel.
3. As soon as your Touch Panel is connected via Ethernet, you may monitor the IP address data via  in the taskbar.



4. After you've confirmed the pre-settings, start your ftp client (e.g. Windows Explorer) and enter the following text into the "address bar":

```
ftp://wince:vipatp@IP-Adresse
```

- ⇒ In the appearing explorer window you can execute the requested file operations.

### 3.7.3 VNC server

The Touch Panel has an integrated VNC server (virtual network control) that allows the total control of the Touch Panel with a PC via network. For this, a window displays the current Touch Panel content for remote control. Operation is performed via PC keyboard and mouse. Condition for the VNC communication is, that the VNC server is started on the Touch Panel and a VNC client on the PC. You may download a VNC client as free-ware from internet.



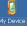

*Because you can deactivate all safety attitudes with the VNC server, you should use these exclusively for start-up! Per default the VNC server is on delivery deactivated.*

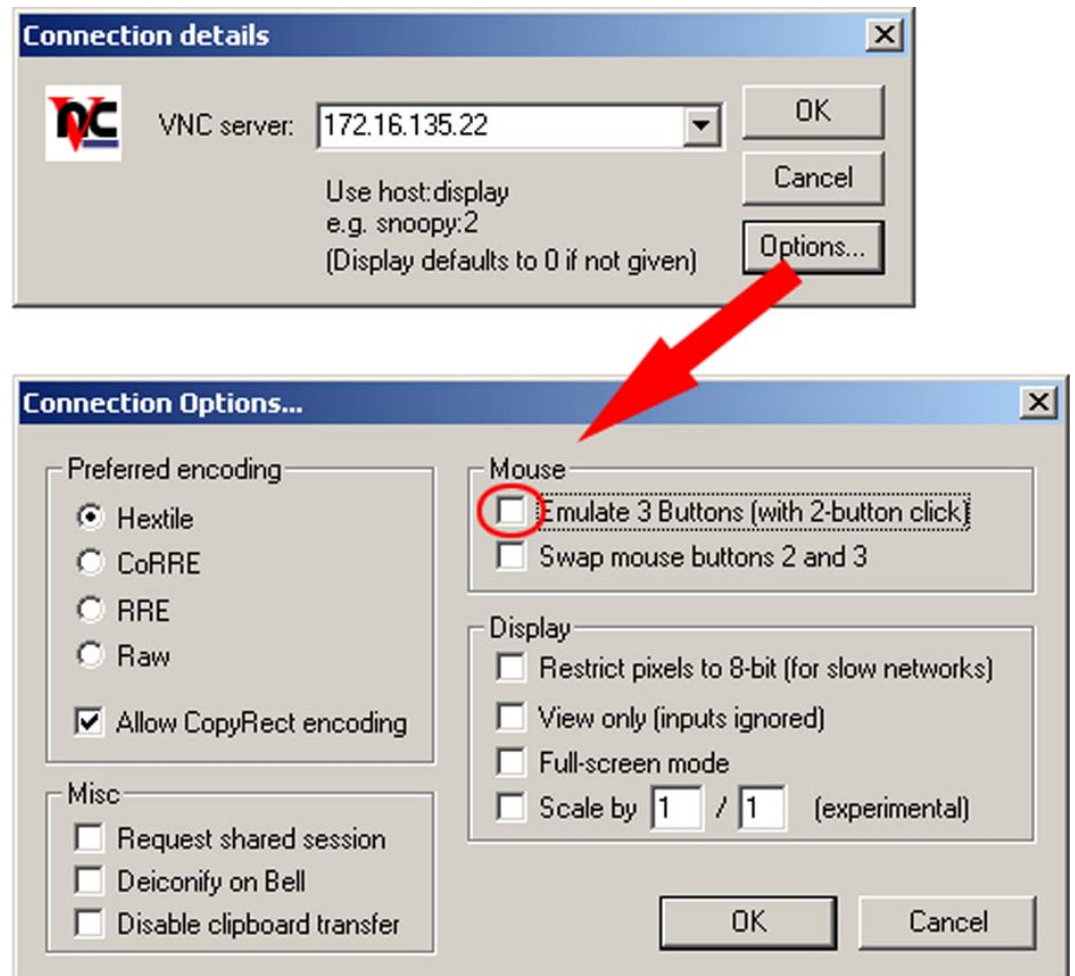
*Due to software reasons VIPA does not support the VNC server function!*

#### Establishing a VNC connection

With "Autostart" you can select the automatic startup of the VNC server, via the Startup-Manager.

The VNC connection establishment has the following approach:

1. Click on  and open the "Windows" directory.
2. Start the VNC server by executing the file winvnc.exe. To show the server has been started, the symbol  appears in the task bar. You may also start the VNC server at the Touch Panel via a Telnet connection by entering the command `winvnc` in the command console with an active Telnet connection.
3. Now start the VNC client vncviewer.exe on your PC.



4. Click on [Options] and deactivate the field "Emulate 3 Buttons..." like shown at *Mouse*.
5. Enter the IP address of the Touch Panel at *VNC server*. Click on [OK] and enter the password *vipatp*. You can change the password over the configuration file, for this execute *vnconfig.exe*. Now a VNC connection is established and the screen content of the Touch Panel is monitored within a window.

Closing the VNC window terminates the VNC connection, the server keeps running.

### 3.8 Access to the network resources

#### Overview

- The Touch Panel allows you to access shared resources in a Microsoft network like drives and printer. Here you may assign existing public directories or printer in the network to local directories or printer in the Touch Panel.
- Condition for this is that you are logged in to the network with your user name and password. The assignment of a network resource is performed in the Touch Panel via the command console "Command Prompt". Start the command console with '*START → Programs → Command Prompt*'.
- The access to the network resource is performed with the commands *Net view* and *Net use*.



**List released resources**

- Shared resources of a network PC can be listed by the command: `\> net view PC-Name`
- For example `net view testserver` lists all shared resources of the network PC "test server". To test the physical connection a PING to the IP address of the network PC may be executed if there are problems while contacting the network PC.

```

\> net view testserver
Shared resources on \\testserver:

Share name      Type      Used as      Comment
-----
Archiv          Disc      (null)       Process data
KyoEDV          Print     (null)       Kyocera FS-680 Printer
Command completed successfully
\>

```

**Connect net drive**

The connection of a local name at the Touch Panel with a shared drive of the network PC happens with the following approach:

1. ➤ Enter the following in the command prompt: `\> net use local_name \network drive /user:User name`
2. ➤ Enter *user name, password* and where app. *user group*.
  - ⇒ After successful login the following message appears: *'Successfully mapped to network name'*.

The connected network drive is then available on the Touch Panel with the *local\_name* via *My Device at Network*.

**Example:**

Local\_Name: data, network drive: testserver\archive, Username:guest

Input: `\> net use data \\testserver\archiv /user:guest`

The connected network drive is then available via `\network\data` at the Touch Panel.

**Configure network printer**

The configuration of a network printer happens with the following approach:

1. ➤ Enter this command into the command prompt: `\> net use printer name network printer`

Example:

Printer name: Printer, network printer: \\testserver\printer

Entry: `\> net use printer \\testserver\printer`
2. ➤ Enter *user name, password* and if necessary *user group*.
  - ⇒ After the successful login the following message appears

Successfully mapped to network printer

The printer may now be accessed as "network\printer".

**Test print**

For example you may print the content of the current directory using `\> dir > network \printer`.

**List network connections**

The listing command for all network connections of your Touch Panel is `\> net use`

Access to the network resources

```
\> net use
Connected resources:

Status          Local Name          Remote Name
-----
Connected       data                \\testserver\archiv
Connected       printer             \\testserver\printer
Command completed successfully
\>
```

### Terminate network connections

You may terminate already assigned network resources via

```
\> net use local_name /d
```

Example: `\> net use data /d` deletes the network connection to the drive "archive" of "test server".

## 4 Deployment under Windows CE 6.0 Prof.

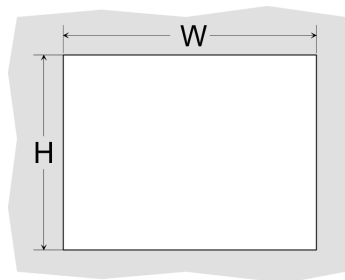
### 4.1 Installation

#### Overview

The Touch Panel is suitable for the installation in operating tables and control cabinet fronts. The installation happens via the back. The Touch Panel is provided with a patented fixing technique that allows an easy connection with a hexagon socket key. A fast and easy device change is possible.

#### Installation cutting

For the installation into a operating tableau and control cabinet fronts, the Touch Panel requires the following front plate cutting:

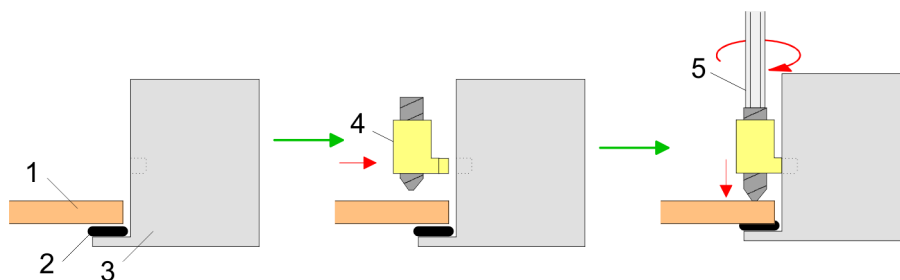


Touch Panel	W x H in mm
62K-NHC0-...	311 x 249mm

#### Installation

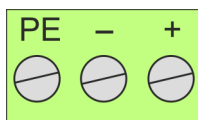
For the installation of the panel, 4 mounting clips and a small hexagon socket key are required.

1. ➤ Push the operator panel [3] from the front side into the front panel cutting [1] until it touches the panel with the seal [2].
2. ➤ Put the mounting clips [4] on all four sides of the panel into the openings. The screws should point in the direction of the front panel.
3. ➤ Screw the screws from the other side with the hexagon socket key [5].



#### Connect power supply

For the cabling of the DC 24V power supply a green plug is used. The connector is a plug with screw contacts. The plug has the following assignment:



- + DC 24V
- DC 0V
- PE Protective earth

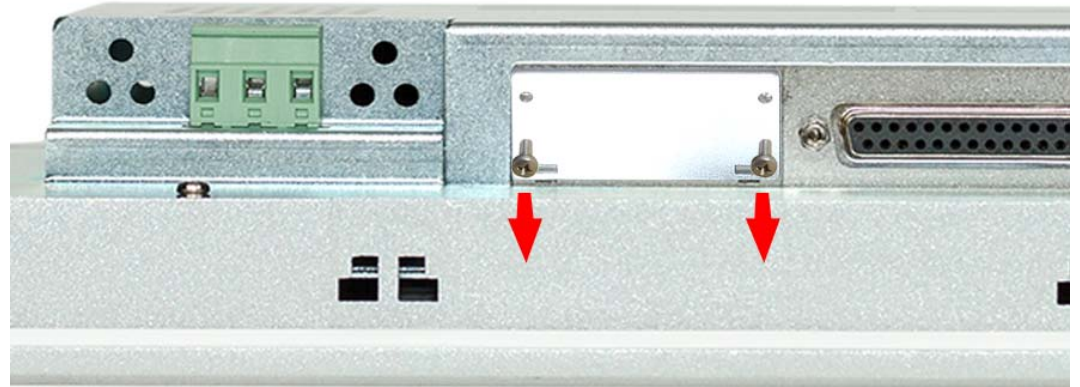
## 4.2 Installation of the optional MPI/PROFIBUS DP interface



### CAUTION!

Personnel and instruments should be grounded when working on electrostatic sensitive modules! Take the interface module only at the holding plate and avoid touching the board! Store respectively send the interface module always in the corresponding ESD packaging!

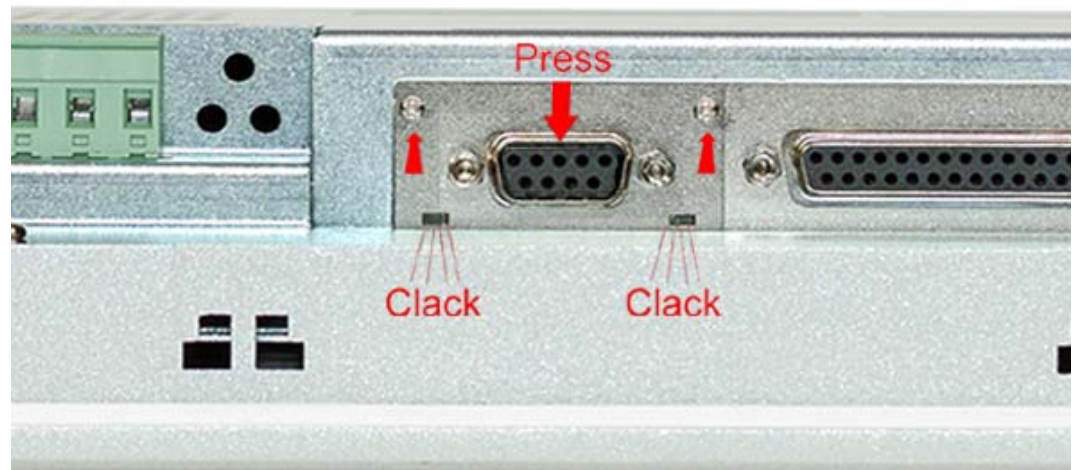
### Installation



1. Remove the cover plate of the COM3 port by removing the screws and pulling the plate.



2. For installation insert the interface module into the opening. Push the interface module in the device until the holding plate fits to the housing. Here the interface module is put into the right position by 2 inner guide rails.



3. Now press the interface module downwards until the holding plate snaps into the lugs.



*Please consider that the holding plate always snaps to the lugs, otherwise the holding plate can not be screwed!*



4. Mount the screws again.

After installation the interface module is automatically recognized and can be configured.

## Demounting

1. Remove the screws.
2. Push the holding plate from the lugs. Use a screwdriver by inserting it gently between the housing and holding plate.
3. Pull the interface module out of the device.
4. Reinstall the cover plate.

## 4.3 Commissioning



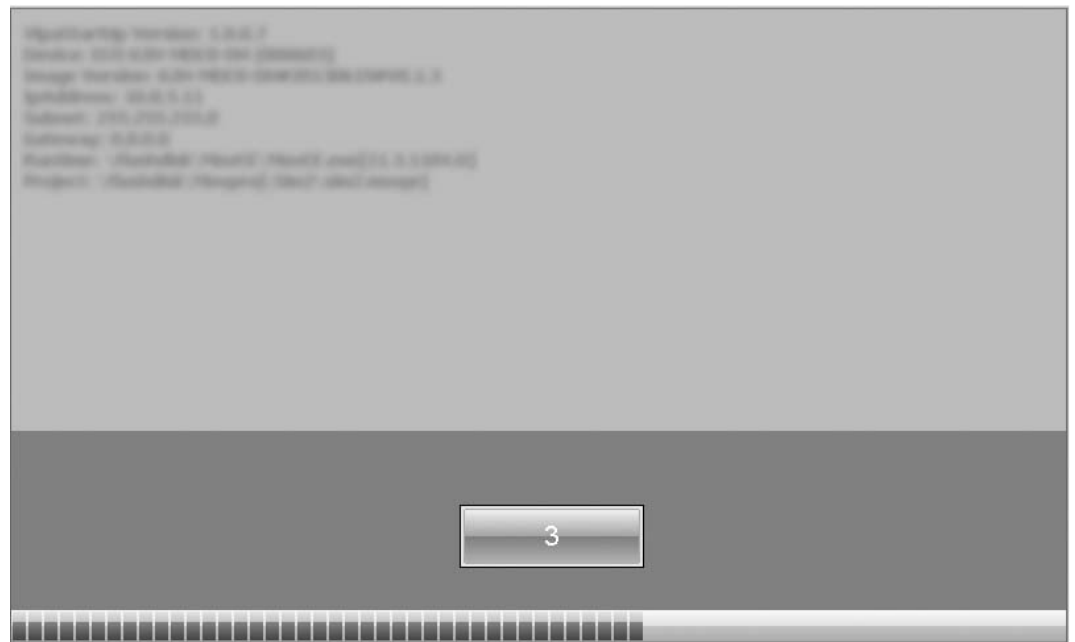
### CAUTION!

- Before commissioning the device must be brought to room temperature.
- At condensation the device must be absolutely dry before connected to power.
- To avoid overheat during operation the device must not be laid open to direct sun light.
- After opening the control cabinet or desk, there are parts with possible dangerous voltage available.
- For all signal connections only screened cables are permitted.
- Signal cables must not be let within the same cable shaft as high voltage cables.

### 4.3.1 VIPA Startup-Manager

#### Start screen

As soon as the Touch Panel is provided by power supply, the *VIPA Startup-Manager* will be loaded. At the first startup of the *VIPA Startup-Manager* the following *start screen* appears.



- There is a button on the *initial screen* with a counter, which counts backwards. If you click on this button within this time, you can return to the *'selection menu'*. If the time expires, the project will start automatically.
- A delay time of 5 seconds is default. In the *'selection menu'* under "Autostart" you can adjust this time.

#### Selection menu

There are following buttons in the *'selection menu'*:

- Settings
- Info/Update
- Autostart
- Backup

- Exit
- Back

### Settings

- In [Settings] under *Change Settings* you can set a password for the *Startup-Manager*. The password will be requested when interrupting the start countdown or before closing the Startup-Managers by "Exit". By default, no password is defined.
- In *Control Panel* [Open...] the system settings like brightness of the display can be preset or the display can be re-calibrated. Here the MPI/DP slave interface may also be configured. Further you get here the Touch Panel information: product number, serial number and licenses.

### Info/Update (firmware)

- To execute the firmware update press the button [Info/Update]. After clicking on [Info/Update] the current image is displayed under "image version" with panel name, creation date and version number.
- With [Make Screen Shot] you can make a screen shot of the panel information and select a destination for its storage.
- With [Search Image] a list of all the firmware images is shown, which are available on the panel and connected storage media. These images will be listed with create data and version number. Choose your new image.

If the select image is not suited for your panel, an error message appears. If the image is suited for your panel, in the following message the current installed image version and the new selected image version are listed.

1. ➤ Click on [Make Image Update] to execute the update. This can take a few seconds.
2. ➤ In the following window click on [Finish] to end the update.
  - ⇒ Then the display gets dark.
3. ➤ Switch the power supply off the panel off and on.
  - ⇒ After the restart the calibration window is opened.
4. ➤ Re-calibrate the panel as described. After calibration tap anywhere on the screen.
  - ⇒ The calibration window will be closed.
5. ➤ Via 'Start → Settings → Control Panel' start the program *AutoRunMaker*.
  - ↳ [Chapter 4.4 'Installation Movicon and Startup-Manager' on page 49](#)

### Autostart

With [Autostart] you define which runtime and which project will be started automatically together with the panel startup.

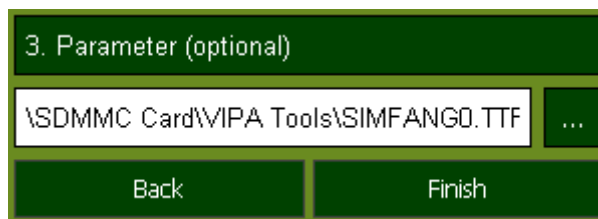
- With [...] at "Runtime path" res. "Project path" all existing runtimes res. projects on the panel and the storage media will be listed.
- Under "Delay Time" you can adjust a delay time > 0 by using the buttons [+] and [-]. 5 seconds are default.
- Via "Rotation" the orientation of the panel can be changed.

Via "Program start" with [+] you can add programmes, which have to start automatically.

1. ➤ Select "start" and assign a name for the program.

2. ➤ Upload your program with [...].





3. ➤ You can optionally set parameters.

4. ➤ Exit with [Finish].

- With "Copy" [...] you can copy Windows® CE files on the panel from a source path to a destination path.
- With "Autostart" you can select the automatic startup of the VNC server, the *Movicon-TCP upload server* resp. the *Startup-Manager*. With [Back] you get back to the *selection menu*.

### Backup

By default, the configuration of the Startup-Manager, the registry settings for the backlight, the local settings and the LAN settings will be saved by [Backup] in '*Flashdisk* ➔ *Backup*'. The name of the backup file is "backup.bkv". Which settings will be saved and the storage location are defined in the file "ToDoList.xml" under '*Flashdisk* ➔ *VipaStartup*'. These can be adjusted accordingly.

### Exit

The *Startup-Manager* will be closed by [Exit] and the system returns to the Windows® screen.

### Back

With [Back] you get back to the start screen of the *Startup-Manager*.

## 4.4 Installation Movicon and Startup-Manager

### Overview

After an image update it is necessary to re-install *Movicon* and *Startup-Manager*. The current data can be found in the service area of [www.vipa.com](http://www.vipa.com).

For the Panel 62K-NHC0-... the directory *VIPA* and the file *AutoRunMaker.cfg* is necessary of the following zip file:


- **62K-NHC0-...\_install\_SD\_Card\_Vxxx.zip**

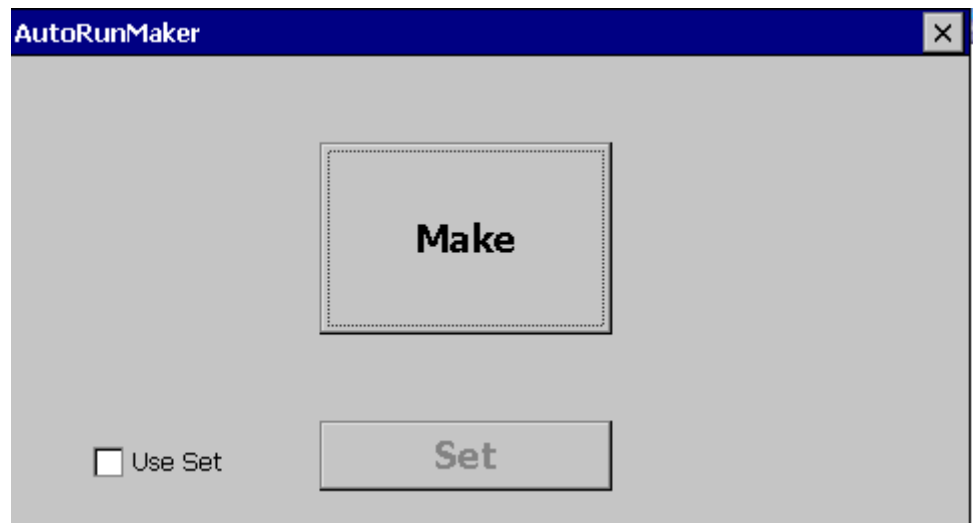


*Before the installation can be established you have to stop all the running programmes. This also applies to programmes which are running in the background, such as the transport service of Movicon (CEUpload-Server.exe).*

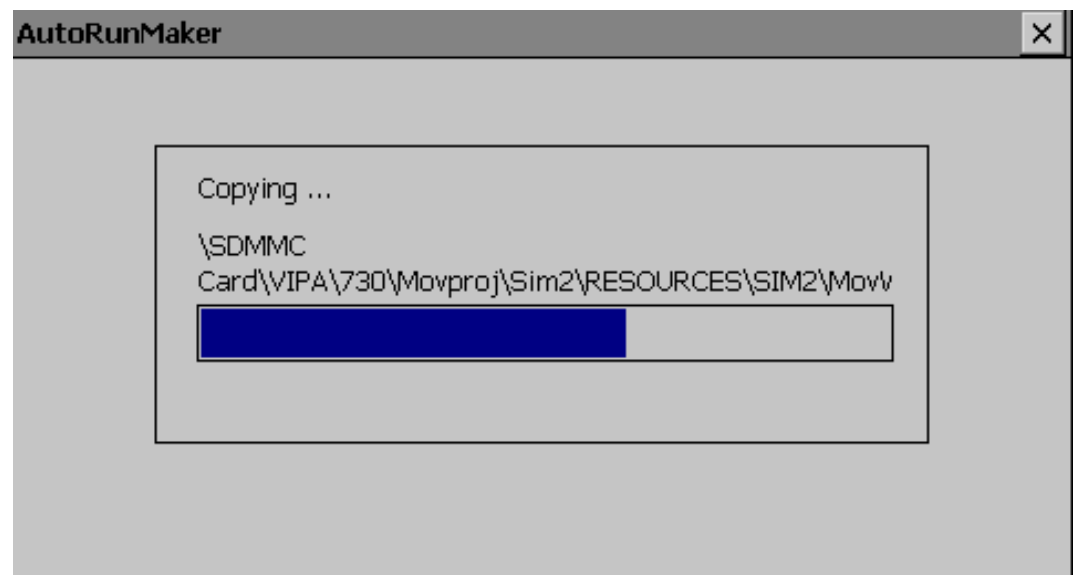
### Proceeding

1. ➤ Call [www.vipa.com](http://www.vipa.com)
2. ➤ Click '*Service Support* ➔ *Downloads* ➔ *Firmware*'.
3. ➤ Via '*HMI* ➔ *TP* ➔ *ECO(+)* *Panels*' navigate to your Panel and download the zip file to your PC.
4. ➤ Unzip the zip file and copy the file to the root directory of your SD card.
5. ➤ Switch-on the panel, install the SD card and select via '*Start* ➔ *Settings*' *Control Panel*.

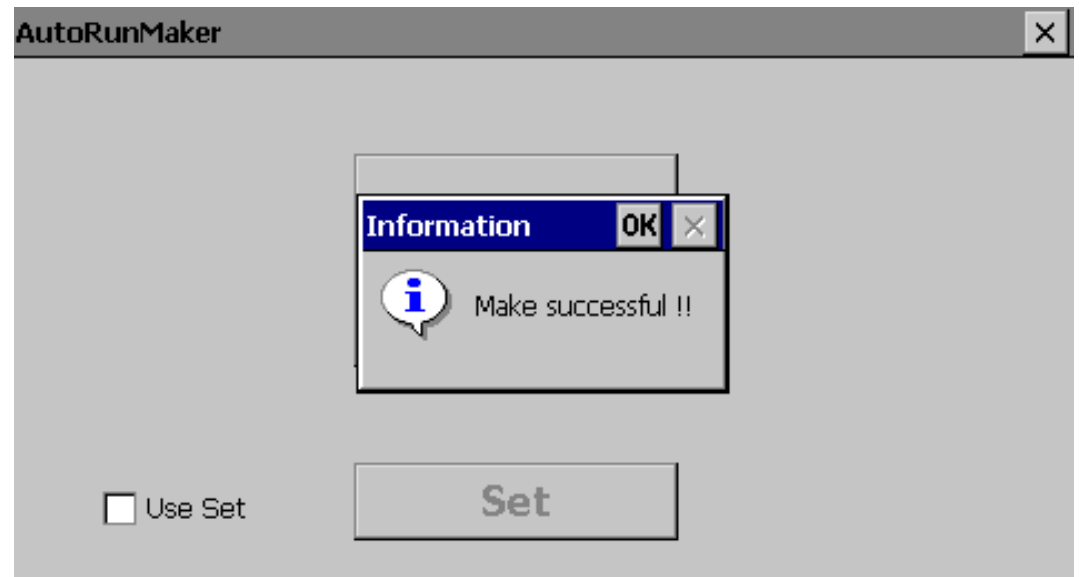
6. Start in the *Control Panel* the program "AutoRunMaker" via double-click on the following symbol .
- ⇒ After start-up the following window appears.



7. Click [Make].
- ⇒ All the necessary files are copied and the registry is accordingly adjusted. The progress is displayed in a new window.



- 8.** ▶ Please wait a moment.  
⇒ After successful execution the following completion screen appears.

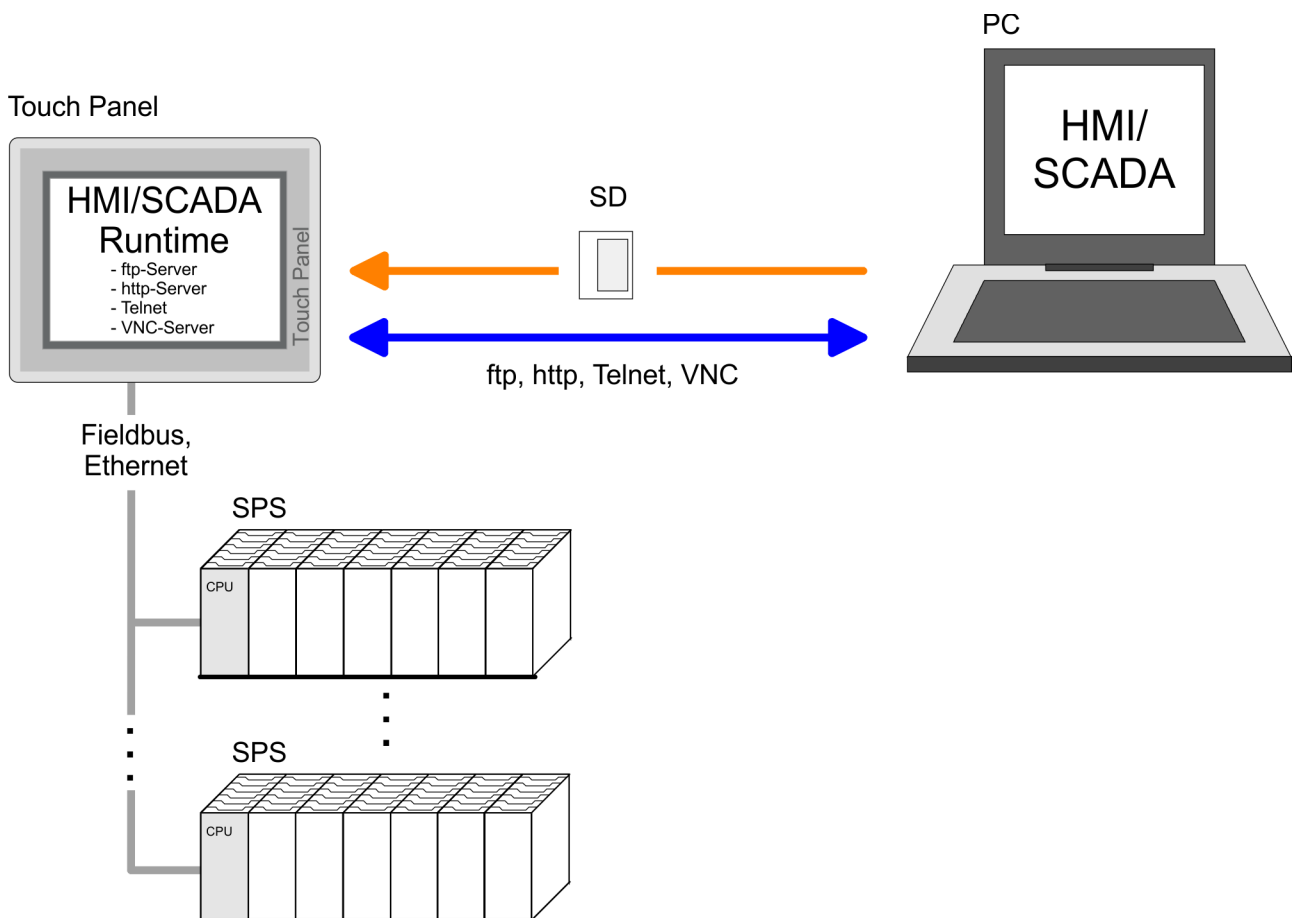


- 9.** ▶ Confirm this window with [OK], remove the SD card and re-start the panel.  
⇒ The panel should start with the Startup-Manager after the restart.

## 4.5 Connection to a PLC system

### Overview

- For the inclusion into your PLC system several HMI/SCADA project-engineering platforms are at your disposal that has to be installed at an external PC. Here you may create your project, where appropriate simulate it and transfer it to the Touch Panel via a connection that you've entered before. Via the at the Touch Panel pre-installed runtime version of the HMI/SCADA project engineering platforms your project is run able.
- By using the according communication driver, the Touch Panel supports connecting options to the PLC via field bus and Ethernet.
- During operation your operating device communicates with the according PLC and reacts to the application courses in the PLC according to the configured processes. Via dialogues configured before, process values may be monitored graphically, altered and evaluated.



## 4.6 Operating system Windows® Embedded CE 6.0 Prof.

### 4.6.1 General

- The newly developed standard Windows® CE allows devices that are communicating with each other to exchange information with Windows® based devices and to establish connections to the Internet.
- Microsoft Windows® CE is a 32bit, open and scalable platform for a multiplicity of communication and data processing devices. The functions like multi-tasking and multi-threading are supported by this operating system.

**Windows® Embedded CE 6.0 Prof.**

Windows® CE 6.0 supports some file viewer and an Internet browser.

**Properties**

- ftp, http, Telnet and VNC server
- RDP (Remote Desktop Protocol)
- Internet Explorer 6
- Registry Editor
- WordPad
- Mouse pointer
- USB keyboard driver
- HP printer driver (COM, Ethernet, USB)
- File viewer for Word, Excel, PowerPoint and PDF
- VIPA Startup Manager

**Differences to the standard Windows® operation**

Please note that for the deployment of Windows® CE a profound knowledge of operating Windows® is assumed. Here are only shown the differences to a "standard" Windows® operating system.

- *Pen entry*  
You're operating the Touch Panel by means of a pencil res. with the finger. When touching an area at the touch screen this area is recognized and the program reacts accordingly. The following types of entry are differentiated:
- *Double click*  
A double click has to be executed like mouse operation by touching the area at the screen twice. A double click on an object opens res. executes this.
- *Drag*  
By tapping on an object and then dragging you may move the object on the screen. If no object is selected, a frame is created by the dragging that selects the touched objects.

**Navigation within the dialog window**

The windows may be moved via the head bar. Here you may also find the [OK] button to confirm entries and the [X] button for exiting the dialog.

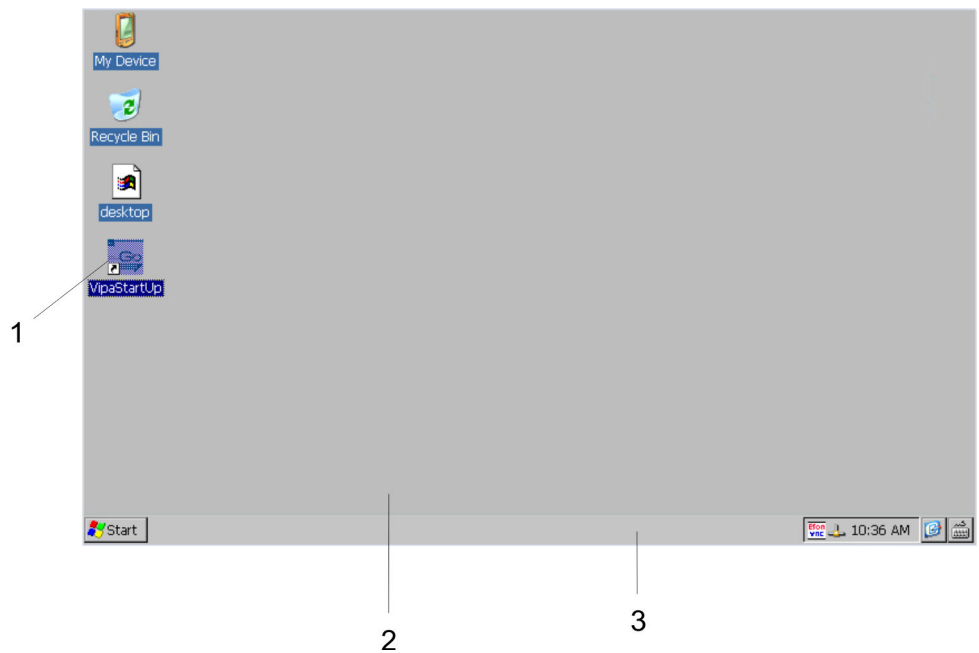
**Exit Windows® (shut down)**

You may not exit Windows®. By switching the power supply off and on again you may restart Windows®. Before a reboot you should always save your data res. close all running applications to avoid data loss.



*Please note that changes are stored automatically after 30 seconds. For manual storage, please use the "suspend" function, to be found in the start menu.*

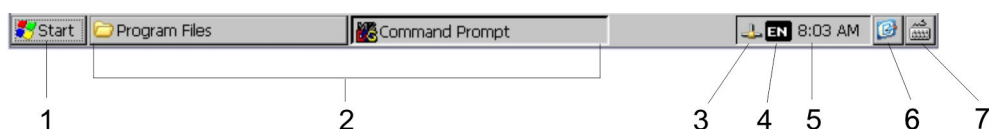
### 4.6.2 Structure



1	<i>Icon</i>	Via icons on the desktop you gain direct access to the application related to the icon.
2	<i>Desktop</i>	The desktop is the screen that is shown after login at Windows® CE. It contains e.g. links to the mostly used applications res. system components.
3	<i>Task bar</i>	The task bar is part of the desktop. When opening an application, a document or a window, every running object is displayed as button on the task bar. Via this buttons you may easily change between the open windows.

### Taskbar


Basically the taskbar has the following structure:



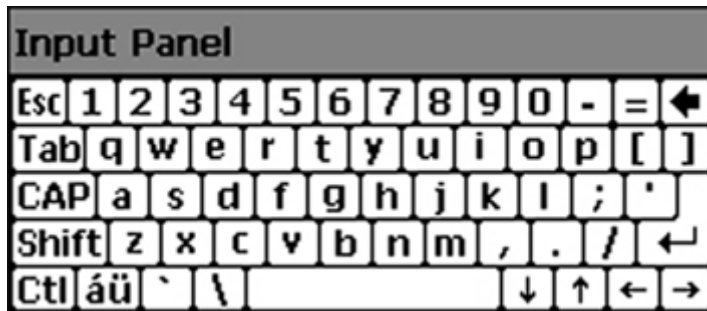
1	<i>Start button</i>	This button offers you access to all components of your Touch Panel like e.g. applications, system settings, file browser etc.
2	<i>Open applications</i>	For every open application a button is to be found in the task bar. There is no button for minimizing. The switch between the applications is performed via this buttons.
3	<i>Network connection</i>	As soon as your Touch Panel is connected via Ethernet you can see here the Ethernet address. If there is no connection via Ethernet, the symbol is displayed crossed out.
4	<i>Keyboard layout</i>	If you've connected a keyboard you may choose the requested language layout via this button.
5	<i>Time</i>	This area shows the time that you may change via double click.

6	Show desktop	All windows are minimized and the desktop is shown.
7	Software keyboard	This button displays a keyboard at the screen. "Hide Input Panel" hides the keyboard again.

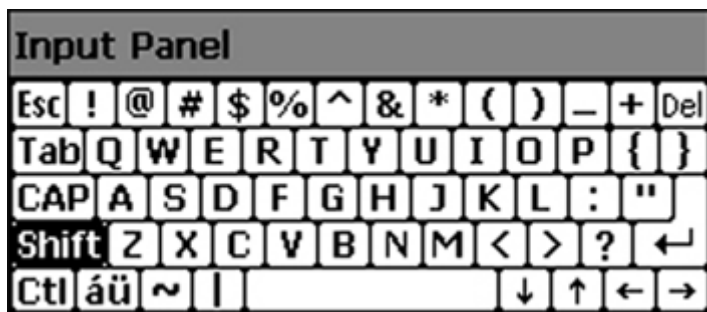
**Software keyboard**

The button  allows you to select one of the available software keyboards. At the moment the following standard keyboards are implemented:

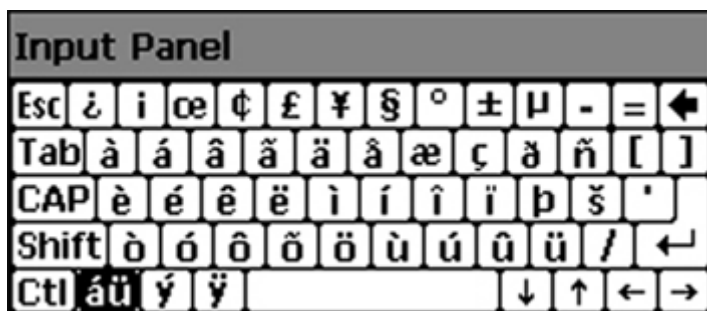
**Keyboard**




At pushed Shift key:



At pushed [a´ü] key:



 Please note that äöü can exclusively be entered via the software keyboard "Keyboard".

**Large KB**

Input Panel															
Esc	F1	F2	F3	F4	F5	F6	F7	F8	F9	F10	F11	F12	Home	End	Prop
`	1	2	3	4	5	6	7	8	9	0	-	=	BS		
Tab	q	w	e	r	t	y	u	i	o	p	[	]	\		
Caps Lock	a	s	d	f	g	h	j	k	l	;	'		return		
Shift	z	x	c	v	b	n	m	,	.	/	up		pgup		
Ctrl	win	Alt							ins	del	lt	dn	rt	pgdn	

At pushed Shift key:

Input Panel															
Esc	F1	F2	F3	F4	F5	F6	F7	F8	F9	F10	F11	F12	Home	End	Prop
~	!	@	#	\$	%	^	&	*	(	)	_	+	BS		
Tab	Q	W	E	R	T	Y	U	I	O	P	{	}			
Caps Lock	A	S	D	F	G	H	J	K	L	:	"		return		
Shift	Z	X	C	V	B	N	M	<	>	?	up		pgup		
Ctrl	win	Alt							ins	del	lt	dn	rt	pgdn	

**Meaning**

- Home** Position 1
- End** End
- BS** Backspace
- up** ↑
- dn** ↓
- lt** ←
- rt** →
- pgup** Page ↑
- pgdn** Page ↓
- ins** Insert
- del** Delete
- Tab** Tabulator
- Shift**
- Caps/Lock**

**Hide keyboard**

The software keyboard allows you to enter key entries without connecting an external keyboard. As soon as an entry is required the software keyboard is automatically shown. *Hide Input Panel* hides the keyboard again.



## System setting (Control Panel)

As many components of the *Control Panel* conform with the *system control* of Windows®, most of the description is not necessary. The description of the control panel components relevant for operating the Touch Panel can be found in the following:

- **Set display**  
Via 'Start → Settings → Control Panel → Display' the dialog windows for the display properties opens. Here you can change the settings for the monitor options. For example you can adjust the brightness via the register 'Backlight → Advanced'.
- **Calibrate touch screen**  
If the touch screen does not always react to a double click or not precisely recognize the position of an entry, you can call the dialog *Stylus* via 'Start → Settings → Control Panel'. In the register *Double-Tap* you can use the grid pattern to preset a double click velocity and test this on the symbol below. Click [OK] to accept the value. The calibration of the touch screen is completed via the register *Calibration* by following the instructions.
- **Set Ethernet parameters**  
The dialog field for pre-setting an Ethernet address is to be found at 'Start → Settings → Network and Dial-up Connections'. The default setting is address assignment via DHCP.



Please consider with the manual assignment of IP addresses that these are not identical for both interfaces. If you accidentally have assigned to the same IP address to both interfaces, then only one interface icon is shown at 'Network and Dial-up Connections'. By switching to DHCP, you receive 2 Interface icons again and can configure them individually.

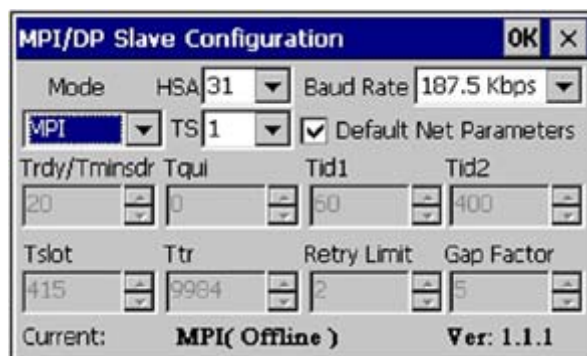
- **System properties (System)**  
Here you receive information about the version of the current Windows® operating system, the memory load and sharing (alterations here are not accepted into the registry) and the copyright. The register Device Name allows you to change the *device name* that is shown during Ethernet communication for instance.

## Configuration MPI/DP slave

To configure the optional MPI/DP interface on the Touch Panel start via 'Start → Settings → Control Panel' or via 'Settings' in the *VIPA Startup-Manager* the tool "MPI/DP Slave Configuration".

- Default: MPI - Address 1

The following settings are only required if not communicate via Movicon.



Via 'mode' the interface could be set up on "DP slave".



The use of the optional MPI/PROFIBUS interface is required.

## 4.7 Integrated Server

### 4.7.1 General

#### Login data

The Touch Panel has several integrated server that enable a remote maintenance within a network. Some servers only allow access by means of entering *User name* and *Password*. The following login data are used standardly:

- User name: **wince**
- Password: **vipatp**

#### Overview

Per default the following server are integrated:

- ftp server (activated)
- http server (activated)
- Telnet (activated)
- VNC (not activated)

#### Phrases

Phrases that are used in the description of the server:

#### Client

A client is an application that uses the service of a server within a network. For example, a web browser is a client because at every call of a website it sends a request to a web server and receives an answer.

#### Server

A server is an application that waits for the contact request of a client application and exchanges messages with it after contact start. This communication type is called Client-Server communication.

#### Host

Computer within a network where at least one server is running.

#### Download

Data transfer Server → Client

#### Upload

Data transfer Client → Server

## 4.7.2 ftp server

By means of a ftp server data between client and server can be exchanged. Here you can copy, delete or create files and directories.

### Conditions for ftp access

Depending on the ftp client your PC must have the following conditions for a ftp connection. If there are still problems with the ftp access please ask your system administrator.

Internet Explorer


- ftp access possible with version 5.5 or higher
- activate directory view for ftp sites

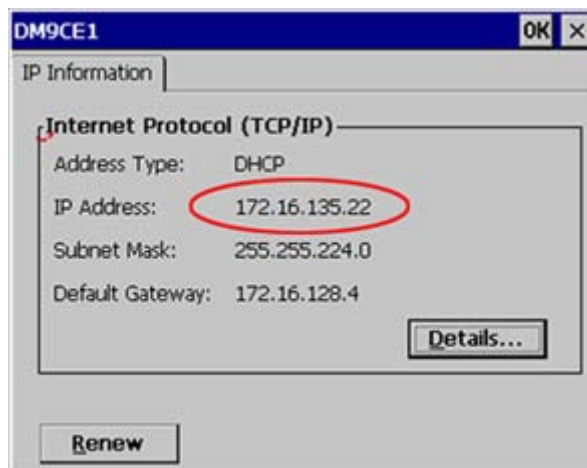
For the adjustment choose in the Internet Explorer 'Options → Internet options', register "extended" in the area "Browsing" and set the following settings:

1. activate: "activate directory view for ftp sites"
2. Restart the Internet Explorer.
  - ⇒ The settings are saved.

### Establishing a ftp connection

Below is explained, how to establish of a ftp connection between a Windows® based PC with Windows Explorer as ftp client and your Touch Panel.

1. Connect your Touch Panel with the network where your PC is a member via an Ethernet cable.
2. Switch on your Touch Panel.
3. As soon as your Touch Panel is connected via Ethernet, you may monitor the IP address data via  in the taskbar.



4. After you've confirmed the pre-settings, start your ftp client (e.g. Windows Explorer) and enter the following text into the "address bar":

```
ftp://wince:vipatp@IP-Adresse
```

- ⇒ In the appearing explorer window you can execute the requested file operations.

### 4.7.3 http server

The Touch Panel has an integrated http server (web server) that allows depending on the access the administration of the Touch Panel res. of websites in the Touch Panel. The administrative access to the http server happens via Ethernet from the PC by setting the IP address of the Touch Panel with attached "Admin" type.

Using the websites you may e.g. publish online documentations for a connected PC or go online with applications on the PC.

#### Web admin

As web admin you have access to all functions that are required for uploading and administrating of websites on the Touch Panel. Additionally you may set the access rights for user and create user groups. More detailed information about creating and administrating of websites on the Touch Panel are available in the online documentation of the web servers.

The login as web admin requires the following steps:

1. Start the web browser at your PC and enter the following into the address bar: IP address/webadmin
2. Enter the following into the authentication:
  - User name: **wince**
  - Password: **vipatp**

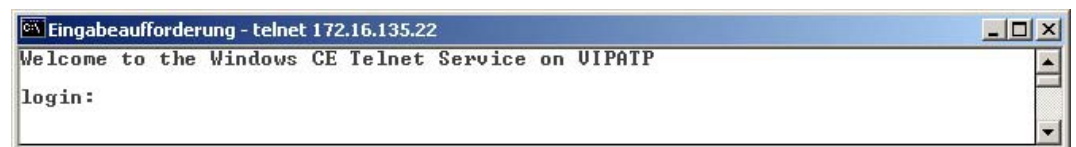
### 4.7.4 Telnet server

Telnet is a text based client-server protocol on TCP level. Using of a Telnet client like e.g. the "MS-DOS console" in your Windows® operating system you may execute text based all file remote functions at your Panel PC like copy, delete and create files and directories. You may also start applications. Terminating an application is not possible.

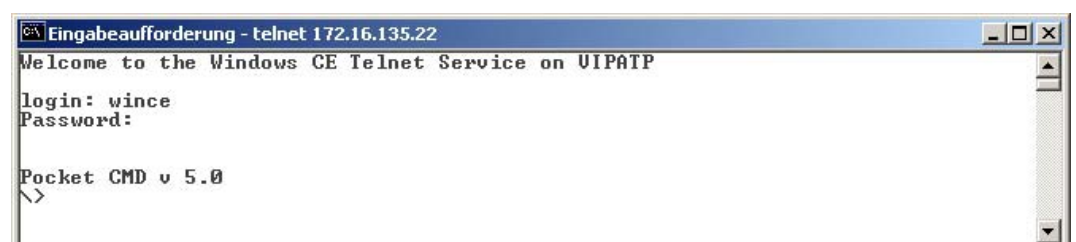
#### Establishing a Telnet connection

The establishing of a Telnet connection is password protected and has the following approach:

1. Start a Telnet client like for example "MS-DOS console" at your PC and enter the following into the address bar: telnet IP address.
  - ⇒ When the connection is established, the Panel PC asks for the user name and the password.



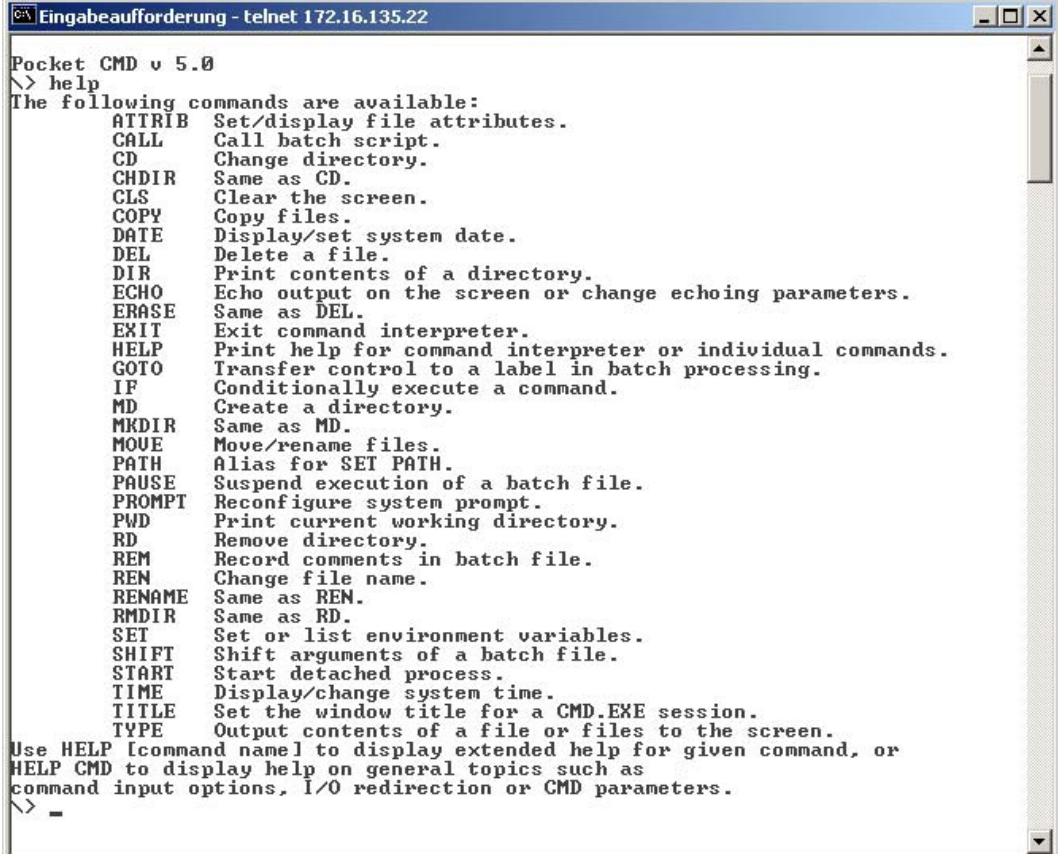
2. Enter the following:
  - Login: **wince**
  - Password: **vipatp** (entry is hidden)
  - ⇒ After entering valid user data a command line for entries appears:



By entering `Exit` res. closing the window you may terminate the Telnet connection at any time.

## Commands

After establishment of a Telnet connection the Panel PC provides you with commands. A list of possible commands with a short description is available via the command help. By beginning with "help" before a command you receive help to this command.



```

Eingabeaufforderung - telnet 172.16.135.22
Pocket CMD v 5.0
\> help
The following commands are available:
  ATTRIB  Set/display file attributes.
  CALL    Call batch script.
  CD      Change directory.
  CHDIR   Same as CD.
  CLS     Clear the screen.
  COPY    Copy files.
  DATE    Display/set system date.
  DEL     Delete a file.
  DIR     Print contents of a directory.
  ECHO    Echo output on the screen or change echoing parameters.
  ERASE   Same as DEL.
  EXIT    Exit command interpreter.
  HELP    Print help for command interpreter or individual commands.
  GOTO    Transfer control to a label in batch processing.
  IF      Conditionally execute a command.
  MD      Create a directory.
  MKDIR   Same as MD.
  MOVE    Move/rename files.
  PATH    Alias for SET PATH.
  PAUSE   Suspend execution of a batch file.
  PROMPT  Reconfigure system prompt.
  PWD     Print current working directory.
  RD      Remove directory.
  REM     Record comments in batch file.
  REN     Change file name.
  RENAME  Same as REN.
  RMDIR   Same as RD.
  SET     Set or list environment variables.
  SHIFT   Shift arguments of a batch file.
  START   Start detached process.
  TIME    Display/change system time.
  TITLE   Set the window title for a CMD.EXE session.
  TYPE    Output contents of a file or files to the screen.
Use HELP [command name] to display extended help for given command, or
HELP CMD to display help on general topics such as
command input options, I/O redirection or CMD parameters.
\> -

```

## 4.7.5 VNC server

The Touch Panel has an integrated VNC server (virtual network control) that allows the total control of the Touch Panel with a PC via network. For this, a window displays the current Touch Panel content for remote control. Operation is performed via PC keyboard and mouse. Condition for the VNC communication is, that the VNC server is started on the Touch Panel and a VNC client on the PC. You may download a VNC client as free-ware from internet.





*Because you can deactivate all safety attitudes with the VNC server, you should use these exclusively for start-up! Per default the VNC server is on delivery deactivated.*

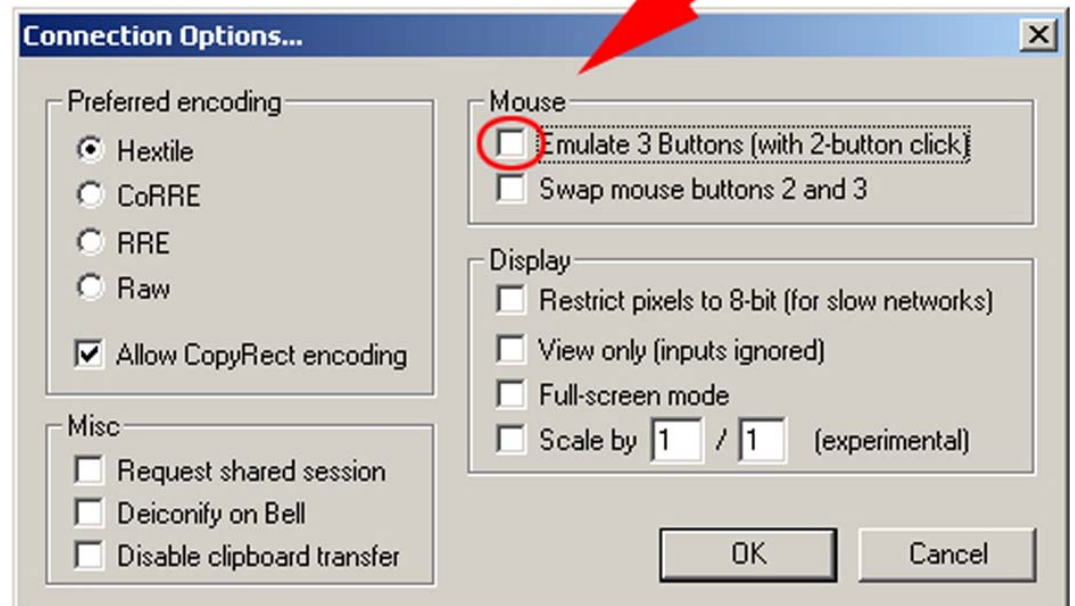
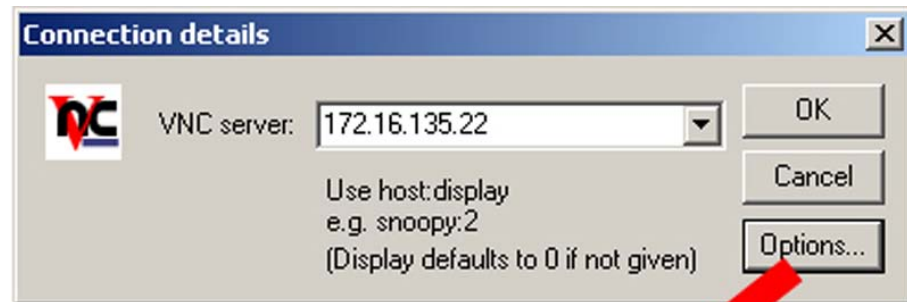
*Due to software reasons VIPA does not support the VNC server function!*

## Establishing a VNC connection

With "Autostart" you can select the automatic startup of the VNC server, via the Startup-Manager.

The VNC connection establishment has the following approach:

1. Click on  and open the "Windows" directory.
2. Start the VNC server by executing the file winvnc.exe. To show the server has been started, the symbol  appears in the task bar. You may also start the VNC server at the Touch Panel via a Telnet connection by entering the command `winvnc` in the command console with an active Telnet connection.
3. Now start the VNC client vncviewer.exe on your PC.



4. Click on [Options] and deactivate the field "Emulate 3 Buttons..." like shown at *Mouse*.
5. Enter the IP address of the Touch Panel at *VNC server*. Click on [OK] and enter the password `vipatp`. You can change the password over the configuration file, for this execute `vnconfig.exe`. Now a VNC connection is established and the screen content of the Touch Panel is monitored within a window.

Closing the VNC window terminates the VNC connection, the server keeps running.

## 4.8 Access to the network resources

### Overview

- The Touch Panel allows you to access shared resources in a Microsoft network like drives and printer. Here you may assign existing public directories or printer in the network to local directories or printer in the Touch Panel.
- Condition for this is that you are logged in to the network with your user name and password. The assignment of a network resource is performed in the Touch Panel via the command console "Command Prompt". Start the command console with 'START → Programs → Command Prompt'.
- The access to the network resource is performed with the commands *Net view* and *Net use*.

### List released resources

- Shared resources of a network PC can be listed by the command: `\> net view PC-Name`
- For example `net view testserver` lists all shared resources of the network PC "test server". To test the physical connection a PING to the IP address of the network PC may be executed if there are problems while contacting the network PC.

```
\> net view testserver
Shared resources on \\testserver:

Share name      Type      Used as      Comment
-----
Archiv          Disc      (null)       Process data
KyoEDV          Print     (null)       Kyocera FS-680 Printer
Command completed successfully
\>
```

### Connect net drive

The connection of a local name at the Touch Panel with a shared drive of the network PC happens with the following approach:

1. ➤ Enter the following in the command prompt: `\> net use local_name \network drive /user:User name`
2. ➤ Enter *user name, password* and where app. *user group*.
  - ⇒ After successful login the following message appears: 'Successfully mapped to network name'.

The connected network drive is then available on the Touch Panel with the *local\_name* via *My Device at Network*.

### Example:

Local\_Name: data, network drive: testserver\archive, Username:guest

Input: `\> net use data \\testserver\archiv /user:guest`

The connected network drive is then available via `\network\data` at the Touch Panel.

### Configure network printer

The configuration of a network printer happens with the following approach:

1. ➤ Enter this command into the command prompt: `\> net use printer name network printer`

Example:

Printer name: Printer, network printer: `\\testserver\printer`

Entry: `\> net use printer \\testserver\printer`

- 2.** Enter *user name*, *password* and if necessary *user group*.
- ⇒ After the successful login the following message appears
- Successfully mapped to network printer
- The printer may now be accessed as "network\printer".

**Test print**

For example you may print the content of the current directory using `\> dir > network\printer`.

**List network connections**

The listing command for all network connections of your Touch Panel is `\> net use`

```
\> net use
Connected resources:

Status          Local Name          Remote Name
-----
Connected      data                \\testserver\archiv
Connected      printer             \\testserver\printer
Command completed successfully
\>
```

**Terminate network connections**

You may terminate already assigned network resources via

```
\> net use local_name /d
```

Example: `\> net use data /d` deletes the network connection to the drive "archive" of "test server".



## 5 Installation Guidelines

### 5.1 Basic rules for the EMC-equitable assembly of installations

**General** The installation guidelines contain information about the interference free deployment of a PLC system. There is the description of the ways, interference may occur in your PLC, how you can make sure the electromagnetic compatibility (EMC), and how you manage the isolation.

**What does EMC mean?** Electromagnetic compatibility (EMC) means the ability of an electrical device, to function error free in an electromagnetic environment without being interfered respectively without interfering the environment.

The components of VIPA are developed for the deployment in industrial environments and meets high demands on the EMC. Nevertheless you should project an EMC planning before installing the components and take conceivable interference causes into account.

**Possible interference causes** Electromagnetic interferences may interfere your control via different ways:

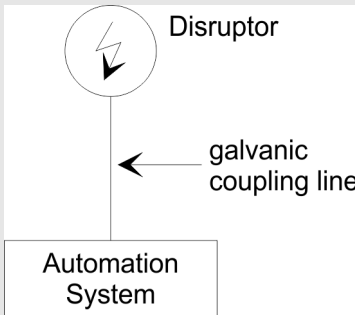
- Electromagnetic fields (RF coupling)
- Magnetic fields with power frequency
- Bus system
- Power supply
- Protected earth conductor

Depending on the spreading medium (lead bound or lead free) and the distance to the interference cause, interferences to your control occur by means of different coupling mechanisms.

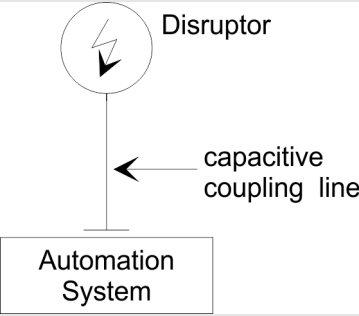
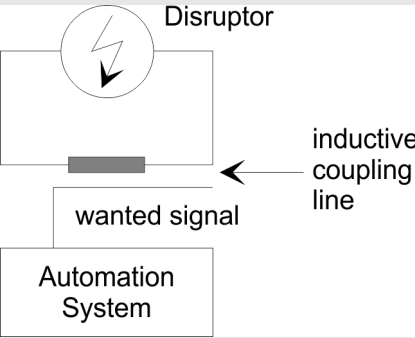
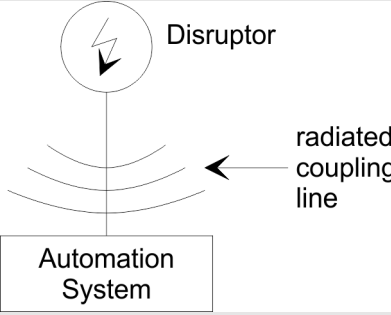
There are:

- galvanic coupling
- capacitive coupling
- inductive coupling
- radiant coupling

**Coupling mechanisms and interference sources** The following table shows the four different coupling mechanisms, their causes and possible interference sources.

Coupling mechanism	Cause	Typical source
<b>Galvanic coupling</b> 	Galvanic or metallic coupling always occurs, when two current circuits have a common line.	<ul style="list-style-type: none"> <li>■ Pulsed devices (Net influence from transducers and foreign net devices)</li> <li>■ Starting motors</li> <li>■ Different potential of component cubicles with common current supply</li> <li>■ Static discharges</li> </ul>

Basic rules for the EMC-equitable assembly of installations

Coupling mechanism	Cause	Typical source
<p><b>Capacitate coupling</b></p> 	<p>Capacitate or electric coupling occurs between conductors with different potential. The coupling is proportionate to the temporal change of the voltage.</p>	<ul style="list-style-type: none"> <li>■ Interference through parallel signal lines</li> <li>■ Static discharge of the personnel</li> <li>■ Contactors</li> </ul>
<p><b>Inductive coupling</b></p> 	<p>Inductive or magnetic coupling occurs between two current active line loops. The magnetic flows associated with the currents induct interference voltages. The coupling is proportional to the time related change of the current.</p>	<ul style="list-style-type: none"> <li>■ Transducers, motors, electric welding devices</li> <li>■ Parallel net cables</li> <li>■ Cables with toggled currents</li> <li>■ Signal cable with high frequency</li> <li>■ Unused coils</li> </ul>
<p><b>Radiate power coupling</b></p> 	<p>One talks of radiate power coupling, when an electromagnetic wave meets a line circuit. The hit of the wave inducts currents and voltages.</p>	<ul style="list-style-type: none"> <li>■ Sender in the neighbourhood (e.g. walkie-talkie)</li> <li>■ Sparking lines (sparking plugs, collector of electric motors, welding devices)</li> </ul>

**Basic rules for EMC**

In the most times it is enough to take care of some elementary rules to guarantee the EMC. Please regard the following basic rules when installing your PLC.

- Take care of a correct area-wide grounding of the inactive metal parts when installing your components.
  - Install a central connection between the ground and the protected earth conductor system.
  - Connect all inactive metal extensive and impedance-low.
  - Please try not to use aluminium parts. Aluminium is easily oxidizing and is therefore less suitable for grounding.
- When cabling, take care of the correct line routing.
  - Organize your cabling in line groups (high voltage, current supply, signal and data lines).
  - Always lay your high voltage lines and signal respectively data lines in separate channels or bundles.
  - Route the signal and data lines as near as possible beside ground areas (e.g. suspension bars, metal rails, tin cabinet).

- Proof the correct fixing of the lead isolation.
  - Data lines must be laid isolated.
  - Analog lines must be laid isolated. When transmitting signals with small amplitudes the one sided laying of the isolation may be favourable.
  - Lay the line isolation extensively on an isolation/protected earth conductor rail directly after the cabinet entry and fix the isolation with cable clamps.
  - Make sure that the isolation/protected earth conductor rail is connected impedance-low with the cabinet.
  - Use metallic or metallised plug cases for isolated data lines.
- In special use cases you should appoint special EMC actions.
  - Consider to wire all inductivities with erase links.
  - Please consider luminescent lamps can influence signal lines.
- Create a homogeneous reference potential and ground all electrical operating supplies when possible.
  - Please take care for the targeted employment of the grounding actions. The grounding of the PLC serves for protection and functionality activity.
  - Connect installation parts and cabinets with your PLC in star topology with the isolation/protected earth conductor system. So you avoid ground loops.
  - If there are potential differences between installation parts and cabinets, lay sufficiently dimensioned potential compensation lines.

## 5.2 EMC-equitable assembly

Mostly, measures for suppressing interference voltages are only taken, when the control is already in commission and the perfect receive of a wanted signal is disturbed. Causes for such interference's are in the most cases inadequate reference potentials, coming from mistakes at the device assembly and installation.

### Guidelines for assembling and grounding of inactive metal parts

When assembling the devices, you have to ensure the large-surface grounding of the inactive metal parts. A correctly done grounding supports an unambiguous reference potential for the control and reduces the impact of coupled interferences.

Grounding means the conducting connection of all inactive metal parts. The sum of all interconnected inactive parts is called ground.

Inactive parts are all conductive parts electrically separated from all active parts by means of a basic isolation and that may only get voltage in case of an error.

The ground must not adopt dangerous contact voltage even in case of an error. Thus you have to connect the ground with the protected earth conductor. To avoid ground loops, local distant ground constructions (cubicles, construction and machine parts) have to be connected with the protected earth conductor system in star-topology.

Please regard at grounding:

- Connect the inactive metal parts as carefully as the active ones.
- Take care of impedance-low metal-metal-connections, e.g. with large-surface and well conductive contacts.
- If you include coated or anodized metal parts in the grounding, you have to come through the isolating protection layers. For this you may use special contact washers or remove the isolation layer.
- Protect the connection points from corrosion, e.g. with grease.
- Moveable grounding parts (e.g. cubicle doors) have to be connected via flexible ground strips. The ground strips should be short and have a large surface, because the surface is decisive for the diversion of high frequency interferences.

### 5.3 EMC-equitable cabling

#### Line routing

Content of this section is the line routing of bus, signal and supply lines. Object of the line routing is to suppress the "slurring" at parallel lines.

#### Line routing inside and outside of cubicles

For an EMC-equitable routing of the lines it is convenient to divide the cables in different groups and install each group itself:

##### Group A

- screened bus and data lines
- screened analog lines
- unshielded lines for direct voltage  $\leq 60V$
- unshielded lines for alternating voltage  $\leq 25V$
- Coaxial cables for monitors

##### Group B

- unshielded lines for direct voltage  $>60V$  and  $\leq 400V$
- unshielded lines for alternating voltage  $>25V$  and  $\leq 400V$

##### Group C

- unshielded lines for direct and alternating voltage  $>400V$

##### Group D

- Lines for H1 respectively TCP/IP

#### Combination of groups

Following the table you may see the conditions for the cabling of the line groups by combining the single groups:

	Group A	Group B	Group C	Group D
Group A	[1]	[2]	[3]	[4]
Group B	[2]	[1]	[3]	[4]
Group C	[3]	[3]	[1]	[4]
Group D	[4]	[4]	[4]	[1]

[1]	The lines may be installed in common bundles or cable trusses.
[2]	The lines have to be installed in different bundles or cable trusses (without min. distance).
[3]	The lines have to be installed in different bundles or cable trusses inside of cubicles and outside of the cubicle but inside the building in separated cable trusses with a min. distance of 10cm.
[4]	The lines have to be installed in different bundles or cable trusses with a min. distance of 50cm.

#### Line routing outside of buildings

Wherever possible, exterior cabling should be installed on metallic cable trays. A galvanic connection must be provided for joints between cable trays. You must abide by the applicable lightning protection and grounding regulations when installing exterior cables.

## Lightning protection



### CAUTION!

Where cables and signal lines for PLC equipment are installed outside of buildings, the conditions for internal and external lightning protection must be satisfied.

- Exterior lines should either be installed in metallic conduit pipes that is grounded on both ends or in steel-reinforced concrete cable trunks with continuously connected reinforcing.
- Signal lines should be protected against overvoltage by varistors or by lightning arrester filled with rare gas.
- Install these protective elements at the location where the cables enter the building.



*Any lightning protection system must be based on an individual assessment of the entire plant. For questions please contact VIPA GmbH.*

## Equipotential bonding

Potential differences can occur between different sections when controllers and peripheral equipment are connected by means of non-isolated connections or the screens of screened cables are connected at both ends and grounded on different sections of the plant. One reason for a potential difference can be that different sections of the plant are powered from different power sources. These potential differences must be reduced by means of equipotential bonding conductors to ensure that the electronic equipment employed on the plant operates properly.

### Rules for equipotential bonding

- The lower the impedance of the equipotential bonding conductor, the higher the effectiveness of potential equalization.
- The impedance of the equipotential bonding conductor must not exceed 10% of the impedance of the screen where screened signal lines are connected between the different sections of the plant and the screening is connected to ground/neutral on both sides.
- The cross-sectional area of the equipotential bonding conductor must be calculated to carry the maximum equalization current. The following cross-sections have been successfully employed:
  - 16mm<sup>2</sup> Cu for equipotential bonding conductors up to 200m
  - 25mm<sup>2</sup> Cu equipotential bonding conductors exceeding 200m.
- Use copper or galvanized steel for equipotential bonding conductors. These must be connected to ground/neutral by means of large-surface connections that are protected from corrosion.
- The equipotential bonding conductor should be installed in such a manner that it includes the smallest surface between the bonding conductor and the signal lines.

### Screening of lines and cables

Screening is one method commonly used to reduce (attenuate) the interference pick-up from magnetic, electrical or electromagnetic fields.

- Interference on screens is conducted to ground by the conductive connection between the screen and the screening rain/enclosure. To avoid interference from these currents it is very important that the neutral connection is a low-impedance connection.
- You should only use cables that are provided with a braided screen. The degree of screening should be more than 80%.

- Avoid cables with foil-type screens as the foil can be easily damaged by tension and pressure at the point of attachment; this can result in reduced effectiveness of the screening action.
- As a rule you should always ground the screens of cables on both ends. This is the only way in which you can ensure that high frequency interference is attenuated properly.

**One-sided grounding of screens**

In exceptional cases it may be necessary to ground the screen on one side only. However, this will only attenuate the lowest frequencies. The one-sided grounding of screens may provide advantages when:

- It is not possible to install an equipotential bonding conductor
- Analogue signals (a few mV or mA) must be transmitted
- Foil-type screening (static screening) is employed.

You should always use metallic or metallised covers for serial data lines. Connect the screen of the data line to the cover. Do **not** connect the screen to PIN 1 of the connector! In case of stationary operations it is recommended that the remove the insulation from the screened cable without cutting the screen and to attach this point to the screening/neutral rail.

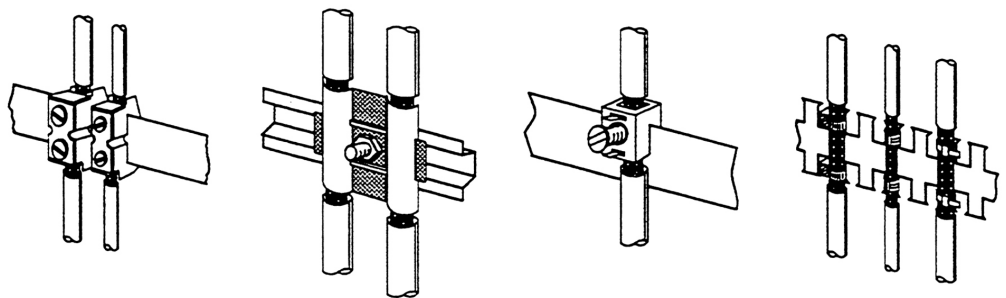


*Potential differences can give rise to an equalization current via the screen connected between the two ground connections. In this case you must install an additional equipotential bonding conductor.*

**Connecting the screen**

Please observe the following points when you handle the screens:

- Use only metallic cable clamps when connecting the screening of cables. These clamps must provide a good electrical contact and a large-surface connection to the screen.
- Attach the screens to the screening rail directly at the point where the cables enter the enclosure. The screening conductor must be continued to the module without interruption, however, it must not be connected to the module!



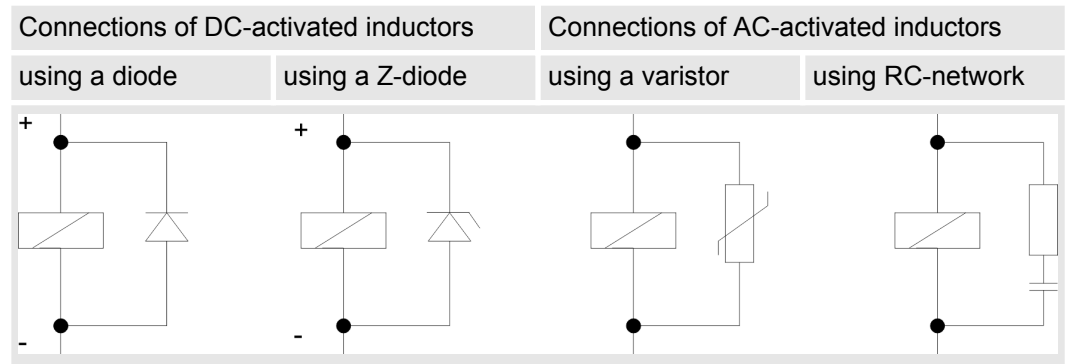
### 5.4 Special precautions providing high noise immunity

**Inductors require snubber networks**

Inductors controlled by your programmable controller (e.g. contactors and relays) do not normally require additional snubber networks or suppressors as the respective modules have been provided with the required components.

**Equipotential bonding**

Snubber networks must only be connected to inductors when output circuits can be disabled by means of additional contacts (e.g. relay contacts). In this case the integrated suppressors on the module are also disabled. You can connect diodes to suppress back-emf, varistors or RC-networks to the inductors.



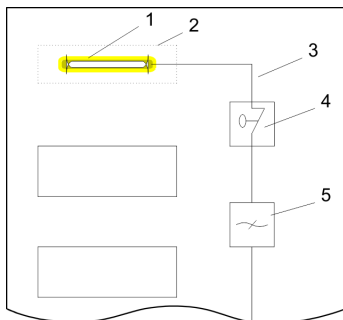
**Power outlet for PGs**

Every cubicle must be provided with a power outlet for the PU. These outlets must be wired to the distribution system, which is also used to connect the neutral conductor for the cubicle.

**Cubicle illumination**

The cubicle illumination should consist of incandescent lights, e.g. LINESTRA-lamps. Avoid using fluorescent lamps as these lamps can cause interference. If you can not avoid using fluorescent lamps you should implement the steps outlined in the following figure.

**Suppression of fluorescent lamps in cubicles**



- 1 Fluorescent lamp
- 2 Screen above the lamp
- 3 Screened cable
- 4 Switch with metallic cover
- 5 Line filter or screened power cable



## 5.5 Checklist for the EMC-compliant installation of controllers

EMV-measures	Space for Notes
<b>Connection of the inactive parts</b>	
<p>You should take special care to check the connections of:</p> <ul style="list-style-type: none"> <li>■ Module racks</li> <li>■ Frames</li> <li>■ Screen and protected earth conductor</li> </ul>	
Are all the inactive metal parts interconnected by means of large-surface and low-impedance connections?	
Has a proper connection been installed with respect to the ground/protected earth conductor system?	
Has the isolation been removed from varnished and anodized surfaces or have these connections been fitted with special contact washer?	
Have the connection been protected from corrosion, e.g. by means of grease?	
Have doors been grounded by means of grounding straps connected to the body of the cubicle?	
<b>Cable routing</b>	
Cabling divided into groups?	
Power cables (230 ... 400V) and signal lines installed in separate channels or bunches?	
<b>Potential compensating</b>	
When installing the equipment at separate locations, check the installation of the potential compensating line.	
<b>Cable screen</b>	
All covers of plugs are metallic?	
All analog and data lines installed screened?	
Line screens attached to the screening or the protected earth conductor?	
Have the screens been connected by means of large-surface and low-impedance cable clamps?	
Cable screens grounded both-sided where possible?	
<b>Inductors</b>	
Have the coils of contactors controlled by means of contacts been connected to snubber networks?	